



LIVE SOUND



MS SERIES

APPLICATIONS

AtlasIED MS mic stands are the ideal choice for both studio and live performers. These mic stands offer several height options, all which include the famous AtlasIED wear-resistant clutch, and low profile, highly stable base that ensures they are going to stay upright and where the artist wants them.

FEATURES

- Ideal for Studio, Recording, and Performance Applications
- Wear-Resistant, 3-Piece Clutch
- Low Profile Cast Iron Base
- Field Serviceable Parts

GENERAL DESCRIPTION

The AtlasIED MS43E is a 3 section, adjustable microphone stand assembly with two wear-resistant clutches for optimum vertical height adjustment and high stability. This unit is adjustable from 25" to 65" and features a 12" diameter, low-profile cast iron base finished in ebony.



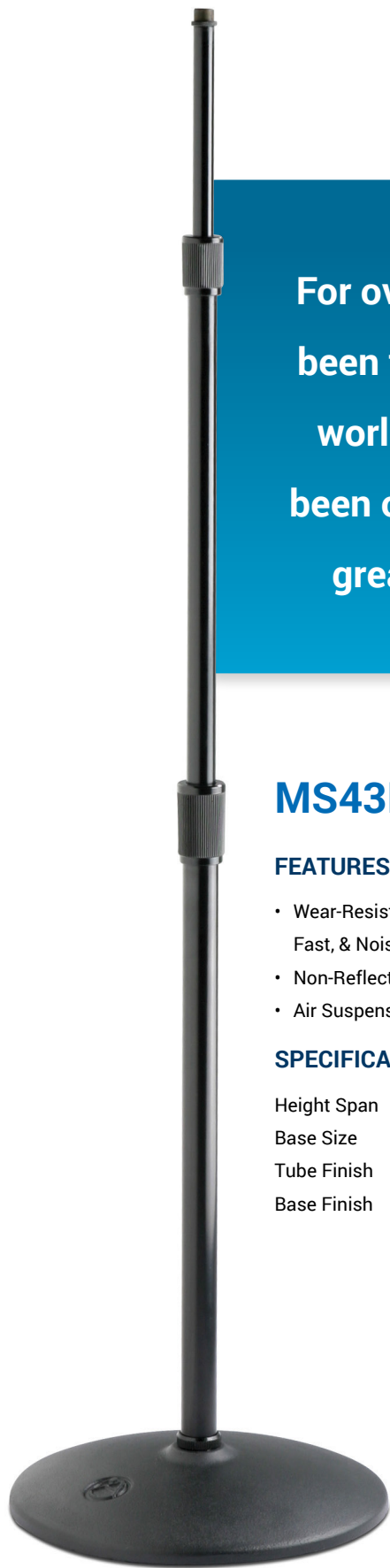
MS-10C flying on stage during a live performance.

The MS-10C / MS-10CE are 2 section, all purpose microphone stands featuring a wear proof clutch for easy height adjustment. The 10" die cast base features edge concentrated weight distribution and is equipped with rubber pads to absorb shock and protect floor surfaces. The 5/8" and 7/8" diameter tubing is fully adjustable with a vertical extension ranging from 35" to 63". Tubing is manufactured of cold rolled steel and terminates in the industry standard 5/8"-27 thread, suitable for microphone clips and accessories. Top and bottom lock-nut rings are included for versatile and secure positioning. Units are available in chrome or non-reflective ebony.

The MS-12C / MS-12CE are 2 section, all purpose microphone stands featuring a wear proof clutch for easy height adjustment. These units include a low profile 10" die cast base. The 5/8" and 7/8" diameter tubing is fully adjustable with a vertical extension ranging from 34" to 62". Tubing is manufactured of cold rolled steel and terminates in the industry standard 5/8"-27 thread, suitable for microphone clips and accessories. Top and bottom lock-nut rings are included for versatile and secure positioning. Units are available in chrome or non-reflective ebony.

The MS20 / MS20E are 2 section, heavy duty microphone stands designed to provide extra stability in both indoor and outdoor applications. These units include a 12" die cast base. The 7/8" and 1-1/8" diameter tubing is fully adjustable with a vertical extension ranging from 37" to 66". Tubing is manufactured of cold rolled steel and terminates in the industry standard 5/8"-27 thread, suitable for microphone clips and accessories. Units are available in chrome or non-reflective ebony.

The MS25 / MS25E are 2 section, heavy duty, professional grade microphone stands. The key feature of these stands is the integrated air suspension system that is designed to protect sensitive microphones, especially in recording applications. The 15" triangular cast iron base is designed to provide maximum stability. The 7/8" and 1-1/8" diameter tubing is fully adjustable with a vertical extension ranging from 38" to 67". Tubing is manufactured of cold rolled steel and terminates in the industry standard 5/8"-27 thread. Units are available in chrome or non-reflective ebony.



For over 75 years AtlasIED mic stands have been the choice for professional musicians worldwide. AtlasIED MS mic stands have been on some of the hottest stages with the greatest artists in the history of music.

MS43E

FEATURES

- Wear-Resistant, 3-Piece Clutch Offers Secure, Fast, & Noise-Free Height Adjustment
- Non-Reflective Ebony Epoxy
- Air Suspension System

SPECIFICATIONS

Height Span	25" - 65" (640-1650mm)
Base Size	12" dia. (305mm)
Tube Finish	Ebony
Base Finish	Ebony

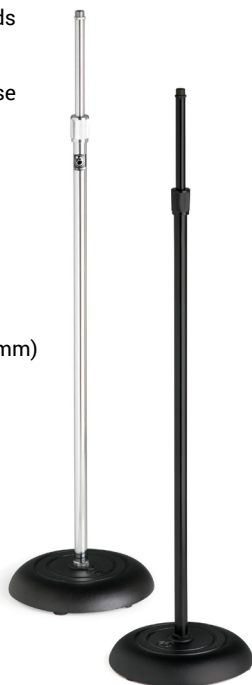
MS-10C / MS-10CE

FEATURES

- Economical, Industry Standard Floor Stands Suitable for a Variety of Applications
- Edge-Concentrated, One-Piece Circular Base Ensures Maximum Stability
- Wear-Resistant, Three-Piece Clutch Offers Secure, Fast, and Noise-Free Height Adjustment

SPECIFICATIONS

Height Span	35" - 63" (890mm - 1600mm)
Base Size	10" dia. (250mm)
Tube Finish	Chrome (MS-10C) Ebony (MS-10CE)
Base Finish	Ebony



MS20 / MS20E

FEATURES

- Circular Cast Iron Base Ensures Maximum Stability
- Wear-Resistant, Three-Piece Clutch Offers Secure, Fast, and Noise-Free Height Adjustment
- Air Suspension System

SPECIFICATIONS

Height Span	37" - 66" (940mm - 1680mm)
Base Size	12" dia. (300mm)
Tube Finish	Chrome (MS20) Ebony (MS20E)
Base Finish	Ebony



MS-12C / MS-12CE

FEATURES

- Economical, Industry Standard Floor Stands Suitable for a Variety of Applications
- Edge-Concentrated, One-Piece Circular Base Ensures Maximum Stability
- Wear-Resistant, Three-Piece Clutch Offers Secure, Fast, and Noise-Free Height Adjustment

SPECIFICATIONS

Height Span	34" - 62" (860mm - 1580mm)
Base Size	10" dia. (250mm)
Tube Finish	Chrome (MS-12C) Ebony (MS-12CE)
Base Finish	Ebony



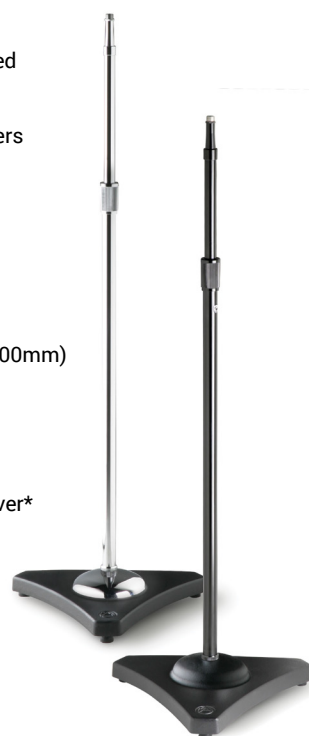
MS25 / MS25E

FEATURES

- Maximum Stability of Triangular and Oversized Bases with Edge-Concentrated Weight Distribution
- Wear-Resistant, Three-Piece Clutch Offers Secure, Fast, and Noise-Free Height Adjustment
- Air Suspension System

SPECIFICATIONS

Height Span	38" - 67" (970mm - 1700mm)
Base Size	15" tri. (380mm)
Tube Finish	Chrome (MS25) Ebony (MS25CE)
Base Finish	Ebony w/ Chrome Cover*



STACKABLE MIC STANDS

APPLICATIONS

The SMS5B is designed to be convenient to store and quick to set up. The unique base design allows up to six stands to be stacked on top of each other in a single 10" footprint. These high quality stands are ideal for use in schools, houses of worship, or any multi-use facility where microphone stands are needed.

FEATURES

- 2 Section Design
- Wear-Resistant Clutch
- Stackable Design

Must Purchase in Master Pack Quantities of 6

GENERAL DESCRIPTION

The SMS5B saves stage and storage space with its ability to stack as many as six units in a single 10" footprint. Now a single layer of microphone stands doesn't need to take up a separate storage room, and space on stage is freed up because of the compact base design. Unit features a wide mouth opening and floating pole design that, through slight rotation, can be easily stacked. The $\frac{5}{8}$ " and $\frac{7}{8}$ " diameter tubing is fully adjustable with a vertical extension ranging from 33" to 60- $\frac{1}{2}$ " heights. The SMS5B is available in non-reflective ebony.

SPECIFICATIONS

Height Span	33" - 60- $\frac{1}{2}$ " (840mm - 1540mm)
Base Size	10" dia. (250mm)
Tube Finish	Ebony
Base Finish	Ebony



**Innovative design allows for
convenient storing while still
delivering renowned Atlas
construction and durability.**



PLATINUM DESIGN SERIES

APPLICATIONS

The AtlasIED Platinum Design Series tripods and booms are ideal for any application including live stage / touring, house of worship, recording studios, and broadcast scenarios.

FEATURES

- Low Profile Leg Cup For Increased Stability
- Heavy Duty Clutch Assembly
- Boom Swivel Including Friction Notches That Prevent Sagging
- Cast 1/2 lb Counterweight
- Non-Reflective Ebony Finish
- Available as Separate Parts or Complete Kits

GENERAL DESCRIPTION

Platinum design tripod / boom systems are engineered to provide the highest level of performance and quality for high demanding applications with the positioning convenience and compact storage advantage only a tripod stand can provide. Night after night on stage or session after session in the studio, performances will never be compromised by a mic stand failure when you use the Platinum Design Series tripod mic stands and booms.

T3664 - Versatile stand that is adjustable from 36" to 64" to meet the needs of seated and standing instrumentalists and performers. Model includes two section metal tubing with 3 piece clutch for easy vertical height adjustment. Unit also features three, low profile metal legs with cup terminations for optimum stability and balance. The end is threaded 5/8"-27 thread and includes a lock-nut ring for versatile positioning of accessories or extension boom. The T3664 has a base spread of 25" (635mm) inches and weighs 5 lbs without boom and 7 lbs with boom.

T1930 - Versatile stand that is adjustable from 19" to 30" to meet the needs of seated instrumentalists and performers. Model includes two section metal tubing with 3 piece clutch for easy vertical height adjustment. Unit also features three, low profile metal legs with cup terminations for optimum stability and balance. The end is threaded 5/8"-27 thread and includes a lock-nut ring for versatile positioning of accessories or extension boom. The T1930 has a base spread of 25" (635mm) inches and weighs 4 lbs without boom and 6 lbs with boom.

B2237 - Adjustable boom designed to be used with the T3664 or T1930 vertical mic stands. Friction notches on the boom swivel are designed to prevent sagging even when used with heavy microphones. Cast 0.5 lb counterweight allows for proper boom positioning while maintaining boom arm balance. B2237 is adjustable from 22" to 37".

The Platinum Design Series features solid construction using molded or cast parts rather than plastic parts like those found on other tripod stands. The PDS offers the versatility of a tripod stand with the reliability and durability found in other Atlas stands. Quality is never compromised.

TB3664 - Kit includes (1) T3664 & (1) B2237 Combination - Ebony

TB1930 - Kit includes (1) T1930 & (1) B2237 Combination - Ebony

MSB3 - Carrying bag* for up to (3) Platinum Design Series Stands

MSB6 - Carrying bag* for up to (6) Platinum Design Series Stands

* Carrying bag not pictured.



T3664

FEATURES

- All Purpose Tripod Mic Stand
- Heavy Duty Clutch Assembly
- Low Profile Leg Cup For Increased Stability

SPECIFICATIONS

Description	Tall Tripod Base
Height Span	36" - 64" (910mm - 1630mm)
Base Size	25" (640mm)
Tube Finish	Non-Reflective Ebony



T1930

FEATURES

- All Purpose Tripod Mic Stand
- Heavy Duty Clutch Assembly
- Low Profile Leg Cup For Increased Stability

SPECIFICATIONS

Description	Short Tripod Base
Height Span	19" - 30" (480mm - 760mm)
Base Size	25" (640mm)
Tube Finish	Non-Reflective Ebony



B2237

FEATURES

- Boom Swivel Including Friction Notches That Prevent Sagging
- Cast 0.5 lb Counterweight

SPECIFICATIONS

Description	Telescoping Boom
Height Span	22" - 37" (560mm - 940mm)
Tube Finish	Non-Reflective Ebony



STUDIO BOOM STANDS

APPLICATIONS

This AtlasIED professional quality boom stand incorporates the functional features and service reliability desired by performers and musicians, as well as broadcast / recording studios, theaters, and performance centers. All models are designed to meet the varying operational requirements of daily recording applications by combining maximum height and boom articulation ranges with increased mobility and dependable performance.

FEATURES

- Professional Boom Stand for Stage and Studio Use
- Caster-Equipped Model Offers Silent and Effortless Mobility
- Adjustable 6 lb. or 2 lb. Counterweight Provides Precision and Stability
- Wear-Resistant, Three-Piece Clutch Offers Secure, Fast, and Noise Free Adjustment
- Variable, Piston-Type Air Suspension System Ensures Microphone Protection
- Rugged Construction and Heavy-Duty Components Assure Long Service Life

GENERAL DESCRIPTION

SB36W / SB36WE - These top-of-the-line boom stands feature a variable, piston-type air suspension system to ensure microphone protection. Model SB-36W is equipped with silent-motion, ball-bearing swivel casters of hard rubber for friction-free and vibration-absorbing mobility.

Two-piece horizontal boom assembly is $\frac{7}{16}$ " diameter cold rolled steel with a heavy-duty, die-cast, gyromatic swivel and an adjustable 6 lb. counterweight for precise and secure orientation. Tubing terminates with an adjustable mic holder swivel with standard $\frac{5}{8}$ "-27 thread to accept all microphones, holders, and adapters.

Vertical tube assembly is manufactured of $1\frac{1}{8}$ " and $\frac{7}{8}$ " chrome-plated cold rolled steel and includes the wear-resistant AtlasIED grip-action clutch for easy adjustment and positive locking. Model includes wheels for a height span of 49" to 73". Triangular cast metal base with edge-concentrated weight distribution offers extra stability and is finished in ebony epoxy with a chrome shell.



Atlas studio boom mics can be used for vocal and instrument recording.

SB11WE - Economical studio boom is especially suited for small studio / broadcast applications and for stage miking of drums and percussion instruments. Unit features a 60" long, two-piece horizontal boom assembly constructed of steel tubing. Boom includes a Performer Series swivel clamp and an adjustable 2 lb. counterweight for effortless boom arm orientation. Tubing also incorporates a 90° angled end for optimum microphone positioning and terminates in the standard $\frac{5}{8}$ "-27 thread to accept all microphones, holders, and adapters.

Vertical tube assembly is $1\frac{1}{8}$ " and $\frac{7}{8}$ " diameter cold rolled steel with an adjustable height span of 43" to 68". Tubing features the wear-resistant AtlasIED grip action clutch for positive locking control. Triangular die-cast base with edge concentrated weight distribution offers extra stability and is equipped with three, hard rubber swivel casters for effortless and silent mobility. Entire assembly is finished in non-reflective ebony epoxy.

SB36W

SPECIFICATIONS

Tube Style	Two Section
Height Span	49" - 73" (1250mm - 1850mm)
Boom Length	62" (1580mm)
Counterweight	Adjustable 6 lbs (2.75 kg)
Base Size	21" (530mm)*
Stability Factor	1890 I.S.I.**
Weight	40 lbs (18 kg)
Tube Finish	Chrome
Base Finish	Ebony with Chrome Shell



SB36WE

SPECIFICATIONS

Tube Style	Two Section
Height Span	49" - 73" (1250mm - 1850mm)
Boom Length	62" (1580mm)
Counterweight	Adjustable 6 lbs (2.75 kg)
Base Size	21" (530mm)*
Stability Factor	1890 I.S.I.**
Weight	40 lbs (18 kg)
Tube Finish	Ebony
Base Finish	Ebony



SB11WE

SPECIFICATIONS

Tube Style	Two Section
Height Span	43" - 68" (1090mm - 1730mm)
Boom Length	60" (1520mm)
Counterweight	Adjustable 2 lbs (0.9 kg)
Base Size	21" (530mm)*
Stability Factor	1610 I.S.I.**
Weight	26 lbs (11.8 kg)
Tube Finish	Ebony
Base Finish	Ebony



* Dimension includes wheels. Triangular cast base is 15"

** Stability Index Factor (I.S.I.) evaluates the ability of a stand / boom assembly to remain at rest when acted upon by an outside force.

DRUM MIKING STANDS

APPLICATIONS

AtlasIED DM Series mic stands are designed to offer excellent performance and durability similar to that found on the MS Series. These stands can be deployed on stage or in studio and can be relied on to stand up to the abuses of being on the road. DM stands feature the acclaimed AtlasIED wear-resistant clutch and look great on any stage with any drum kit.

FEATURES

- Field Serviceable Parts Guarantee Long Product Life
- High-Quality Materials Withstand Frequent Transport, Set-Up, and Tear-Down
- Low-Height Adjustment is Ideal for Close-in Miking of Amplifiers, Percussion, String, and Rhythm Instruments
- Oversized Cast Base Provides Maximum Stability and Protection for High-Quality Kick-Drum Microphones
- Wear-Resistant, 3-Piece Clutch Offers Secure, Fast, and Noise-Free Height Adjustment
- Finished in Chrome or Ebony

GENERAL DESCRIPTION

Because of their extraordinary stability, these low-height, adjustable microphone stands are ideal for professional miking of drum kits, percussion and string instruments, and guitar / bass guitar amplifiers. Combine this low-to-medium height stand with companion boom Model PB11X(E) for use by seated performers on stage or in the studio. The combination of a floor-stand base with desk-stand height is ideal for kick-drum miking. Includes a threaded tip assembly for compatibility with a variety of booms, clamps, goosenecks, and accessories.

AtlasIED drum miking stands are known for their reliability and durability whether they are used in studio or on stage.



Atlas offers a drum mic stand for every type of drummer and kit.

DMS7

FEATURES

- High-Quality Materials Withstand Frequent Transport, Set-Up, and Tear-Down
- Low-Height Adjustment is Ideal for Close-in Miking of Amplifiers, Percussion, String, and Rhythm Instruments
- Oversized Cast Base Provides Maximum Stability and Protection for High-Quality Kick-Drum Microphones

SPECIFICATIONS

Height Span	8" - 13" (200mm - 330mm)
Base Size	10" dia. (250mm)
Tube Finish	Chrome
Base Finish	Ebony



DMS7E

FEATURES

- High-Quality Materials Withstand Frequent Transport, Set-Up, and Tear-Down
- Low-Height Adjustment is Ideal for Close-in Miking of Amplifiers, Percussion, String, and Rhythm Instruments
- Oversized Cast Base Provides Maximum Stability and Protection for High-Quality Kick-Drum Microphones

SPECIFICATIONS

Height Span	8" - 13" (200mm - 330mm)
Base Size	10" dia. (250mm)
Tube Finish	Ebony
Base Finish	Ebony



DMS10

FEATURES

- High-Quality Materials Withstand Frequent Transport, Set-Up, and Tear-Down
- Low-Height Adjustment is Ideal for Close-in Miking of Amplifiers, Percussion, String, and Rhythm Instruments
- Oversized Cast Base Provides Maximum Stability and Protection for High-Quality Kick-Drum Microphones

SPECIFICATIONS

Height Span	14-1/4" - 26-1/4" (360mm - 670mm)
Base Size	10" dia. (250mm)
Tube Finish	Chrome
Base Finish	Ebony



DMS10E

FEATURES

- High-Quality Materials Withstand Frequent Transport, Set-Up, and Tear-Down
- Low-Height Adjustment is Ideal for Close-in Miking of Amplifiers, Percussion, String, and Rhythm Instruments
- Oversized Cast Base Provides Maximum Stability and Protection for High-Quality Kick-Drum Microphones

SPECIFICATIONS

Height Span	14-1/4" - 26-1/4" (360mm - 670mm)
Base Size	10" dia. (250mm)
Tube Finish	Ebony
Base Finish	Ebony



DESKTOP MIC STANDS

APPLICATIONS

AtlasIED microphone stands meet functional and aesthetic requirements for microphone support and placement within contemporary and traditional decors. The extensive selection includes models for use on banquet and meeting room consoles, court room and dispatcher desks, sports/recreation booths, church pulpits, and telephone switchboards. High-stability units are also suited for application in various sound reinforcement systems, as well as broadcast and recording studios.

FEATURES

- Versatile Stands Fulfill Functional and Aesthetic Miking Requirements for Microphone Placement
- Quality Construction Assures Extended Service and Quality Appearance
- Weighted Bases Provide Maximum Stability

GENERAL DESCRIPTION

AtlasIED microphone desk stands assure optimum stability and “like new” appearance for many years of service. Ebony finished bases are attractively styled and present a quality appearance for traditional and contemporary decors. Microphone placement and positioning is enhanced by the “locking nut” feature which securely fastens adapters and holders to the desk stands. The seamless tubing is $\frac{5}{8}$ " cold rolled steel and terminates in the industry standard $\frac{5}{8}$ "-27 thread pattern for use with microphone accessories. Fixed-height stand selection includes Models DS2, DS5(E), and DS14. Adjustable-height stand Model DS7(E) features the wear-resistant 3-piece clutch for positive locking control.

DS2 - Low silhouette stand features an integral tension variable mount to reduce conductivity of external mechanical vibrations. High-stability, die-cast metal base with protective pads includes notched area for convenient placement of cards or pens. Fixed-height tubing is chrome plated. Base is supplied in non-reflective ebony.

DS14 - Professionally styled stand includes die-cast “wishbone” shaped base. Finished in ebony and features 3" high chrome tubing.

DS5 / DS5E - Fixed-height stands include traditional, circular cast iron base and chrome-plated tubing for application with any standard microphone. DS5 features chrome plated tubing, DS5E is finished in ebony epoxy.

DS7 / DS7E - Versatile stands may be adjusted from 8" - 13" and include a grip-action clutch and ebony-finished cast iron base. DS-7 features chrome-plated tubing; DS7E is supplied with non-reflective ebony tubing.

SMS2B - Saves desk and storage space with its ability to stack as many as six units in a single 6" footprint. Unit features a wide mouth opening and floating pole design that, through slight rotation, can be easily stacked. The SMS2B is available in non-reflective ebony.

News anchors, sportscasters,
and radio personalities trust
AtlasIED desktop mic stands
to provide the support their
equipment needs, night in and
night out, year after year.



Our DS Series mic stands are ideal for use in desktop recording applications.

SMS2B

SPECIFICATIONS

Height Span	5" (127mm)
Base Size	6" dia. (152mm)
Weight	1.8 lbs (0.82 kg)
Base Material	Cast Iron
Tube Finish	Ebony
Base Finish	Ebony



DS2

SPECIFICATIONS

Height Span	4" (102mm)
Base Size	6" L x 4" W (152mm x 102mm)
Weight	2 lbs (1 kg)
Base Material	Cast Zinc
Tube Finish	Chrome
Base Finish	Ebony



DS14

SPECIFICATIONS

Height Span	8" (203mm)
Base Size	Wishbone
Weight	1 lb (0.45 kg)
Base Material	Cast Iron
Tube Finish	Chrome
Base Finish	Ebony



DS5

SPECIFICATIONS

Height Span	5" (127mm)
Base Size	6" dia. (152mm)
Weight	3 lbs (1.4 kg)
Base Material	Cast Iron
Tube Finish	Chrome
Base Finish	Ebony



DS3E

SPECIFICATIONS

Height Span	5" (127mm)
Base Size	6" dia. (152mm)
Weight	3 lbs (1.4 kg)
Base Material	Cast Iron
Tube Finish	Ebony
Base Finish	Ebony



DS7

SPECIFICATIONS

Height Span	8" - 13" (203mm - 330mm)
Base Size	6" dia. (152mm)
Weight	3 lbs (1.4 kg)
Base Material	Cast Iron
Tube Finish	Chrome
Base Finish	Ebony



DS7E

SPECIFICATIONS

Height Span	8" - 13" (203mm - 330mm)
Base Size	6" dia. (152mm)
Weight	3 lbs (1.4 kg)
Base Material	Cast Iron
Tube Finish	Ebony
Base Finish	Ebony



BOOM ATTACHMENTS

APPLICATIONS

AtlasIED boom attachments are designed to work in conjunction with AtlasIED mic stands for studio, recording, and performance applications.

FEATURES

- Chrome or Ebony Finish
- Perfect for Drum / Piano / Guitar Amp and Short Distance Miking
- Adjustable 2 lb Counterweight For Stability
- Fixed Length Boom for General Recording and Live Sound Applications
- Booms Extend With a Single Motion and Are Suitable for a Wide Variety of Miking Applications

GENERAL DESCRIPTION

The PB11XCH / PB11XEB are compact booms that extend from 16-1/4" to 24-1/2" with a single motion, perfect for drum / piano / guitar amp and short distance miking. Units include a threaded end cap and an adjustable 2 lb counterweight for stability. Finish is chrome or ebony epoxy.

The PB15CH / PB15EB are fixed length, all-purpose, high-quality booms that measure 34" long and include an adjustable 2 lb counterweights for stability. Finish is chrome or ebony epoxy.

The PB21XCH / PB21XEB booms extend from 25-1/4" to 38-1/2" with a single motion and are suitable for a wide variety of miking applications. Units include a threaded end cap and an adjustable 2 lb counterweight for stability. Finish is chrome or ebony epoxy.

AtlasIED booms are regarded as the best in the industry and with a wide selection available, there is an Atlas Solution for any boom need.



Atlas boom attachments are ideal for stage or studio.

PB11XCH

SPECIFICATIONS

Height Span	16-1/4" - 24-1/2" (410mm - 622mm)
Counter Weight	Adjustable 2 lbs (0.9 kg)
Tube Finish	Chrome Plated



PB11XEB

SPECIFICATIONS

Height Span	16-1/4" - 24-1/2" (410mm - 622mm)
Counter Weight	Adjustable 2 lbs (0.9 kg)
Tube Finish	Ebony Epoxy



PB15CH

SPECIFICATIONS

Height	34" (860mm)
Counter Weight	Adjustable 2 lbs (0.9 kg)
Tube Finish	Chrome Plated



PB15EB

SPECIFICATIONS

Height	34" (860mm)
Counter Weight	Adjustable 2 lbs (0.9 kg)
Tube Finish	Ebony Epoxy



PB21XCH

SPECIFICATIONS

Height Span	25-1/4" - 38-1/2" (640mm - 980mm)
Counter Weight	Adjustable 2 lbs (0.9 kg)
Tube Finish	Chrome Plated



PB21XEB

SPECIFICATIONS

Height Span	25-1/4" - 38-1/2" (640mm - 980mm)
Counter Weight	Adjustable 2 lbs (0.9 kg)
Tube Finish	Ebony Epoxy



SPEAKER STAND

APPLICATIONS

The AtlasIED SS500E is ideal for elevating sound, monitor, and control equipment for touring musicians as well as for use in churches, schools, theaters, and anywhere needing easy transport, set-up, and tear down. The lightweight stand provides easy vertical positioning at a variety of heights and folds for quick mobility and storage. The optional SSA7 platform adapter extends application versatility to speakers without stand pole mounting capability.

FEATURES

- Supports up to 150 lbs
- Stand Folds to a Minimal 55" for Convenient Portability
- Height Adjusts from 55" to 83" for Vertical Flexibility
- Positive Clamping System for Slip-Free Equipment Support

GENERAL DESCRIPTION

The SS500E was designed for easy transportability, set-up, and tear-down; the heavy-duty aluminum speaker stand SS500E weighs a mere 6.3 lbs and supports up to 150 lbs. Additionally, the stand folds to a minimum length of 55" making it a great portable stand for touring musicians and in churches, schools, and theaters. The height adjusts from 55" to 83" for versatile positioning and support of sound, monitor, and control equipment.

Stand is equipped with a positive clamping system with safety pin to assure slip-free support of elevated equipment. Reversible vertical tube assembly contains 1-1/2" and 1-3/8" tubing ends. Clutch mechanism includes a protective insert for scratch-free height adjustment. The stand is finished in non-reflective ebony and the clutch mechanism includes a protective insert for scratch-free height adjustments.

The optional universal platform adapter SSA7 for the Atlas SS500E features two 3/8" x 2" slots plus 12 equipment mounting holes to meet a variety of support applications. Mounting holes also match OmniMount™ 30 and 60 Series patterns. Material is steel and the finish is ebony.

SSA7 SPEAKER ADAPTER

SPECIFICATIONS

Base Type	Universal Platform
Mounting Pattern	Two 3/8" - 2" Slots and Twelve Holes
Weight	1 lb (0.45 kg)
Finish	Ebony



Portable, durable, and lightweight are the hallmarks of a quality speaker stand that is never in the same spot twice. High quality materials and design make these the only option for professionals and enthusiasts alike.

SS500E SPEAKER STAND

SPECIFICATIONS

Base Type	46" (1150mm) Tripod
Height Span	55" - 83" (1400 - 2110mm)
Weight	6.3 lbs (2.86 kg)
Finish	Ebony



Shown with SM12CXT Speaker Mounted via SSA7 Speaker Adapter (SM12CXT & SSA7 Sold Separately)

MICROPHONE CLIP

FEATURES

- Made from Rugged Molded Plastic
- Accommodates Microphones with a Tapered Diameter of 1" - 1-1/2"

GENERAL DESCRIPTION

This industry standard microphone clip is available in black.

MICCLIP

SPECIFICATIONS

Thread Connection 5/8"-27

Finish Ebony



AtlasIED offers a wide assortment of microphone stand accessories that address the needs of all types of applications and performers to ensure that the job can get done properly on time, every time.

QUICK RELEASE TUBE ADAPTER

FEATURES

- Perfect For Touring Companies Who Require Quick Dis-Assembly For Storage and Transportation
- Works With 7/8"-27 Threaded Stands - MS-10C, MS-10CE, MS-12C, MS-12CE

GENERAL DESCRIPTION

The two piece design uses a unique ball bearing interconnect designed to save set-up and tear down time in touring applications. For installation the QR-2 assembly is threaded between the 7/8" tube and base of the mic stand (MS10C, MS10CE, MS12C, MS12CE). After the show, the technician simply steps on the low profile outer release ring of the QR-2 allowing the entire upper tube assembly to be separated from the base saving the time consuming operation of unscrewing the base / tube for storage.

The QR-2 is constructed of durable machined steel and finished in black chromate to blend in perfectly with the mic stand base top surface for an unobtrusive on-stage look.

QR-2

SPECIFICATIONS

Diameter 7/8" (22mm)

Weight 1.5 lbs (0.68 kg)



GOOSENECK FLEXIBLE EXTENSIONS

FEATURES

- Attach to Any Mic Stand or Adapter with 5/8"-27 Threads
- Available in Chrome or Ebony
- Flexible Enough to Adjust, Strong Enough to Stay In Place

GENERAL DESCRIPTION

Flexible goosenecks in 6", 13", and 19" lengths, respectively, attach to any microphone stand or adapter with 5/8"-27 male and female threads. Inside diameter is .338". Available in chrome or ebony (E) finish.



GN-6

SPECIFICATIONS

Length	6" (152mm)
Diameter	3/8" (10mm)
Weight	0.25 lbs (0.11 kg)
Finish	Chrome

GN-6E

SPECIFICATIONS

Length	6" (152mm)
Diameter	3/8" (10mm)
Weight	0.25 lbs (0.11 kg)
Finish	Ebony

GN-13

SPECIFICATIONS

Length	13" (330mm)
Diameter	3/8" (10mm)
Weight	0.5 lbs (0.23 kg)
Finish	Chrome

GN-13E

SPECIFICATIONS

Length	13" (330mm)
Diameter	3/8" (10mm)
Weight	0.5 lbs (0.23 kg)
Finish	Ebony

GN-19

SPECIFICATIONS

Length	19" (483mm)
Diameter	3/8" (10mm)
Weight	0.75 lbs (0.34 kg)
Finish	Chrome

GN-19E

SPECIFICATIONS

Length	19" (483mm)
Diameter	3/8" (10mm)
Weight	0.75 lbs (0.34 kg)
Finish	Ebony

CLIP MOUNTING ACCESSORIES

FEATURES

- Largest Selection of Microphone Adapters, Extensions, Fittings, and Flanges for use with Floor, Desk, Loudspeaker, and Studio Boom Stands
- U. S. Standard 5/8"-27 Termination Accommodates All Types of Microphone Holders and Stands
- Quality Craftsmanship Assures Compatibility and Long-Lasting Performance
- Durable Design for use in Touring P.A. Applications

GENERAL DESCRIPTION

LO-2B / LO-2BE - Lock-on accessory provides fast, convenient set-up and take-down of microphone holders and boom attachments with standard 5/8"-27 threads. Accessory is particularly useful for outdoor touring applications where inclement weather can necessitate the quick removal of expensive microphones. Unit features a secure, snap-on fastener and durable, push-button release. 2-5/8" long. Available in chrome or ebony (E).

LO-2F - 100 piece bulk pack of LO-2B disconnect top section only. Chrome finish.

LO-2FE - 100 piece bulk pack of LO-2BE disconnect top section only. Ebony finish.

TM-1 / TM-1E - Twin microphone mounts provide for the horizontal attachment of two or three 5/8"-27 threaded microphones onto most stands, goosenecks and stand adapters. Units are 8-3/4" wide and finished in chrome or ebony (E).

LO-2B

SPECIFICATIONS

Weight	0.19 lbs (0.09 kg)
Finish	Chrome

LO-2BE

SPECIFICATIONS

Weight	0.19 lbs (0.09 kg)
Finish	Ebony

TM-1

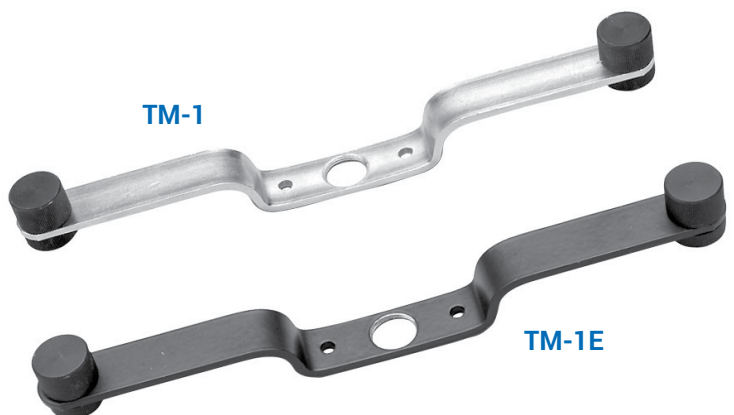
SPECIFICATIONS

Weight	0.31 lbs (0.14 kg)
Finish	Chrome

TM-1E

SPECIFICATIONS

Weight	0.31 lbs (0.14 kg)
Finish	Ebony



MULTI-PURPOSE CLAMPS

FEATURES

- Largest Selection of Microphone Adapters, Extensions, Fittings, and Flanges for use with Floor, Desk, Loudspeaker, and Studio Boom Stands
- U. S. Standard $\frac{5}{8}$ "-27 Termination Accommodates All Types of Microphone Holders and Stands
- Quality Craftsmanship Assures Compatibility and Long-Lasting Performance
- Durable Design for Use in Touring P.A. Applications

GENERAL DESCRIPTION

MAC-1 - Patented, multi-use adapter / clamp secures microphones, horizontal booms, or accessories with standard $\frac{5}{8}$ "-27 threads. Versatile unit also clamp mounts to $\frac{5}{8}$ " and $\frac{7}{8}$ " diameter tubing or to free-standing instruments, keyboards, synthesizers, drum, and percussion instruments with tubing / mounting surface up to $1\frac{1}{2}$ " in diameter. Unit is equipped with uniquely-engineered three-position, removable hex adapter which allows for convenient vertical or horizontal mounting. Clamp features nylon end cap to prevent marring of tube / surface finish. Fabricated from high-strength extruded aluminum and finished in ebony epoxy $3\frac{1}{2}$ " high.

CO-1B - Connect-on swivel adapter / clamp facilitates installation of a second microphone with standard $\frac{5}{8}$ "-27 threads to any floor or desk stand with $\frac{5}{8}$ " or $\frac{7}{8}$ " diameter tubing. Adapter piece can be removed and fastened to mic mount for fast, easy set-up and take-down. $3\frac{1}{2}$ " long. Ebony finish.

MAC-1

SPECIFICATIONS

Length	$3\frac{1}{2}$ " (89mm)
Weight	0.38 lbs (0.17 kg)
Finish	Ebony Epoxy



CO-1B

SPECIFICATIONS

Length	$3\frac{1}{2}$ " (89mm)
Weight	0.19 lbs (0.09 kg)
Finish	Ebony



CABLE HANGERS AND FEED-THRU ADAPTER

FEATURES

- Largest Selection of Microphone Adapters, Extensions, Fittings, and Flanges for use with Floor, Desk, Loudspeaker, and Studio Boom Stands
- U. S. Standard 5/8"-27 Termination Accommodates All Types of Microphone Holders and Stands
- Quality Craftsmanship Assures Compatibility and Long-Lasting Performance
- Durable Design for Use in Touring P.A. Applications

GENERAL DESCRIPTION

AD-15B - Chrome 4" cable feed-thru adapter with standard 5/8" male and female threads.

CH-1B / CH-1BE - Versatile and unique accessory can be used to conveniently hang a tambourine or to neatly guide cabling down the tube. Single screw-mounting clamp adjusts to fit all tube assembly sizes. Available in chrome or ebony (E).

CH-1B

SPECIFICATIONS

Weight	0.31 lbs (0.14 kg)
Finish	Chrome



CH-1BE

SPECIFICATIONS

Weight	0.31 lbs (0.14 kg)
Finish	Ebony



AD-15B

SPECIFICATIONS

Weight	0.14 lbs (0.06 kg)
Finish	Chrome



TUBE EXTENSIONS

FEATURES

- U.S. Standard 5/8"-27 Termination Accommodates All Types of Microphone Holders
- Quality Craftsmanship Assures Compatibility and Long-Lasting Performance
- Durable Design for Use in Touring P.A. Applications

GENERAL DESCRIPTION

AD-4B - Tube extension coupling, 3/4" long with 5/8"-27 male running thread. Brass finish, no plating.

AD-5B - Tube extension coupling, 5/8"-27 female to 5/8"-27 female. Chrome plated.

AD-6B - Tube extension coupling, 7/8"-27 female to 5/8"-27 female. Chrome plated.

AD-7B - Tube extension, 3" long with 5/8"-27 male threads at each end. Chrome plated.

AD-8B - Tube extension, 6" long with 5/8"-27 male threads at each end. Chrome plated.

AD-4B

SPECIFICATIONS

Length	3/4" (19mm)
Diameter	5/8" (16mm)
Weight	0.0375 lbs (0.02 kg)
Finish	Brass

AD-5B

SPECIFICATIONS

Length	3/4" (19mm)
Diameter	5/8" (16mm)
Weight	0.0375 lbs (0.02 kg)
Finish	Chrome

AD-6B

SPECIFICATIONS

Length	1-1/2" (38mm)
Diameter	7/8" (22mm)
Weight	0.125 lbs (0.06 kg)
Finish	Chrome

AD-7B

SPECIFICATIONS

Length	3" (76mm)
Diameter	5/8" (15.9mm)
Weight	0.08 lbs (0.04 kg)
Finish	Chrome

AD-8B

SPECIFICATIONS

Length	6" (152mm)
Diameter	5/8" (16mm)
Weight	0.1375 lbs (0.06 kg)
Finish	Chrome



AD-4B



AD-5B



AD-8B



AD-6B



AD-7B

SURFACE MOUNT MIC FLANGE

FEATURES

- U. S. Standard $\frac{5}{8}$ "-27 Termination Accommodates All Types of Microphone Holders and Stands
- Quality Craftsmanship Assures Compatibility and Long-Lasting Performance
- Durable Design for Use in Touring P.A. Applications

GENERAL DESCRIPTION

AD-11B - Surface mount female mic flange, $\frac{5}{8}$ "-27 female thread with 1- $\frac{3}{4}$ " base diameter. Chrome finish.

AD-11 - 100 piece bulk pack of AD-11B. Chrome finish.

AD-11BE - Surface mount female mic flange, $\frac{5}{8}$ "-27 female thread with 1- $\frac{3}{4}$ " base diameter. Ebony finish.

AD-11E - 100 piece bulk pack of AD-11BE. Ebony finish.

AD-12B - Surface mount male mic flange, $\frac{5}{8}$ "-27 male thread with 1- $\frac{1}{4}$ " base diameter. Chrome finish.

AD-12 - 100 piece bulk pack of AD-12B. Chrome finish.

AD-12BE - Surface mount male mic flange, $\frac{5}{8}$ "-27 male thread with 1- $\frac{1}{4}$ " base diameter. Ebony finish.

AD-12E - 100 piece bulk pack of AD-12BE. Ebony finish.

AD-11B

SPECIFICATIONS

Diameter	1- $\frac{3}{4}$ " (45mm)
Weight	0.0625 lbs (0.03 kg)
Finish	Chrome



AD-11BE

SPECIFICATIONS

Diameter	1- $\frac{3}{4}$ " (45mm)
Weight	0.0625 lbs (0.03 kg)
Finish	Ebony



AD-12B

SPECIFICATIONS

Diameter	1- $\frac{1}{4}$ " (32mm)
Weight	0.08 lbs (0.04 kg)
Finish	Chrome



AD-12BE

SPECIFICATIONS

Diameter	1- $\frac{1}{4}$ " (32mm)
Weight	0.08 lbs (0.04 kg)
Finish	Ebony



REPLACEMENT PARTS

FLOOR STANDS

FEATURES

- Available in Choice of Chrome or Non-Reflective Ebony Epoxy Finish
- Economical, Industry Standard Floor Stands Suitable for a Variety of Applications
- Edge-Concentrated, One-Piece Circular Base Ensures Maximum Stability
- Field Serviceable Parts Guarantee Long Product Life
- Wear-Resistant, Three-Piece Clutch Offers Secure, Fast, and Noise-Free Height Adjustment

GENERAL DESCRIPTION

MSC-K - Service clutch kit for MS-10C / MS-12C / DMS7 / DS7.
Includes Chrome finish barrel, split ring, and solid retainer ring.

MSCE-K - Service clutch kit for MS-10CE / MS-12CE / DMS7E / DS7E.
Includes ebony finish barrel, split ring, and solid retainer ring.

MSC - Tube assembly for MS-10C / MS-12C.

Includes one (1) 5/8" tube, one (1) 7/8" tube, and one (1) set of MSC-K components. Chrome finish.

MSCE - Tube assembly for MS-10CE / MS-12CE.

Includes one (1) 5/8" tube, one (1) 7/8" tube, and one (1) set of MSCE-K components. Ebony finish.

MSC-K

SPECIFICATIONS

Diameter	7/8" (22mm)
Weight	0.30 lbs (0.14 kg)
Finish	Chrome



MSCE-K

SPECIFICATIONS

Diameter	7/8" (22mm)
Weight	0.30 lbs (0.14 kg)
Finish	Ebony



MSC

SPECIFICATIONS

Length	13" (330mm)
Weight	2.30 lbs (1.04 kg)
Finish	Chrome



MSCE

SPECIFICATIONS

Length	13" (330mm)
Weight	2.30 lbs (1.04 kg)
Finish	Ebony



REPLACEMENT PARTS

MS-20B

FEATURES

- Available in Choice of Chrome or Ebony Finish
- Includes Air Dampening System
- Suitable for Indoor / Outdoor Use

GENERAL DESCRIPTION

MS2025T - Replacement tube assembly for MS20 / MS25. Chrome finish.

MS2025TE - Replacement tube assembly for MS20 / MS25. Ebony finish.

MS-20B - Base assembly for MS-20 / MS-20E. Ebony finish.

MS20-K - Clutch assembly for MS-20 / MS-25 / SB36W. Chrome finish. Includes chrome clutch barrel, compression split ring, and metal insert.

MS20E-K - Clutch assembly for MS-20E / MS-25E / SB11WE / SB36WE. Ebony finish. Includes ebony clutch barrel, compression split ring, and metal insert.

MS2XTA - MS-20 / MS-25 Top adapter. Chrome finish. Converts 7/8"-27 tube (male) to 5/8"-27 tube (male).

MS2XTAE - MS-20 / MS-25 Top adapter. Ebony finish. Converts 7/8"-27 tube (male) to 5/8"-27 tube (male).

SPECIFICATIONS

Diameter	12" (305mm)
Weight	20 lbs (9.1 kg)
Finish	Ebony



MS20-K

SPECIFICATIONS

Diameter	1-1/8" (29mm)
Weight	0.50 lbs (0.23 kg)
Finish	Chrome



MS20E-K

SPECIFICATIONS

Diameter	1-1/8" (29mm)
Weight	0.50 lbs (0.23 kg)
Finish	Ebony



MS2025T

SPECIFICATIONS

Diameter	1-1/8" (29mm)
Height	37" - 60" (940mm - 1524mm)
Finish	Chrome



MS2025TE

SPECIFICATIONS

Diameter	1-1/8" (29mm)
Height	37" - 60" (940mm - 1524mm)
Finish	Ebony



MS2XTA

SPECIFICATIONS

Diameter	7/8" (22mm)
Weight	0.25 lbs (0.11 kg)
Finish	Chrome



MS2XTAE

SPECIFICATIONS

Diameter	7/8" (22mm)
Weight	0.25 lbs (0.11 kg)
Finish	Ebony



REPLACEMENT PARTS **PBB-K**

STUDIO BOOMS

GENERAL DESCRIPTION

PBB-K - Replacement swivel assembly for model SB-36W stands manufactured prior to 2003.

SB36CSTR - Caster Kit For SB-11-WE and SB-36W Mic Stands.

SB36WGHT - Replacement 6 lb. counterweight for the SB-36 and SB-36W Studio Boom. Ebony Finish.

XX4707700 - Replacement swivel guide for SB-36 and SB-36W mic stands. Swivel fits 7/8"-27 tube size. Chrome finish.

SPECIFICATIONS

Weight	2.16 lbs (0.98 kg)
Finish	Ebony



SB36CSTR

SPECIFICATIONS

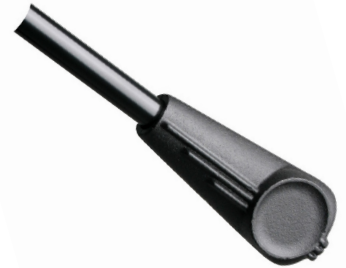
Weight	3.3 lbs (1.5 kg)
Finish	Chrome and Ebony



SB36WGHT

SPECIFICATIONS

Weight	6 lbs (2.72 kg)
Finish	Ebony



XX4707700

SPECIFICATIONS

Weight	1.8 lbs (0.82 kg)
Finish	Chrome



GENERAL SERVICE PARTS

GENERAL DESCRIPTION

LR58C-25 - 5/8"-27 lock ring for AtlasIED mic stands. Chrome finish, 25 pieces.

LR58E-25 - 5/8"-27 lock ring for AtlasIED mic stands. Ebony finish, 25 pieces.

LR78C-10 - 7/8"-27 lock ring for AtlasIED mic stands. Chrome finish, 10 pieces.

LR78E-10 - 7/8"-27 lock ring for AtlasIED mic stands. Ebony finish, 10 pieces.

MS1012RF-24 - Replacement feet for MS10 and MS12 stands manufactured prior to 2003. 24 pieces.

MS12BASE - Base assembly for MS-12C / MS-12CE. Ebony finish.

LR58C-25

SPECIFICATIONS

Weight	0.18 lbs (0.08 kg)
Finish	Chrome



LR58E-25

SPECIFICATIONS

Weight	0.18 lbs (0.08 kg)
Finish	Ebony



MS1012RF-24

SPECIFICATIONS

Weight	0.52 lbs (0.24 kg)
Finish	Ebony



LR78C-10

SPECIFICATIONS

Weight	0.22 lbs (0.1 kg)
Finish	Chrome



MS12BASE

SPECIFICATIONS

Weight	7 lbs (3.2 kg)
Finish	Ebony

LR78E-10

SPECIFICATIONS

Weight	0.22 lbs (0.1 kg)
Finish	Ebony



19" WIDE OPENING PORTABLE FLOOR CABINET WITH ADJUSTABLE RAILS AND CASTERS

APPLICATIONS

The RX Series is a high strength cabinet used to house electronic equipment for any type of application, both commercial and residential, where portability and freedom of movement are required. Applications include Communications equipment, Audio Video equipment, Security systems, IT equipment, Industrial systems and Computer equipment.

FEATURES

- Two Model Heights and Depths Available
- Models with "SFD" Suffix Include Locking Solid Front Door
- 16-gauge CRS Frame Manufactured to E.I.A. Standards
- Four, 4" Heavy-Duty Casters (175 lb. cap. / ea.)
- Includes 1 Pair Adjustable, 12-gauge, Front-to-Rear Mounting Rails
- Mounting Rail Supports with Slotted Cut-Outs for Vertical Wire Management
- Rubber-Padded Steel Grip "Road Handles" (2 per Side)
- Welded Frame for Long-Lasting Durability

OPTIONAL ACCESSORIES

- RR Series Rack Rails
- Doors, Drawers, Shelves, Fans, and Accessories
- Lacing Bars
- Front Doors



RX21-25



RX14-25SFD

RX Series was developed to offer a high quality, secure, and mobile rack that can easily be transported from one location to another without having to remove the equipment.

GENERAL DESCRIPTION

RX Series portable cabinets are available in 25-1/2" or 30" depths, are 22-5/16" wide, and available in 14RU and 21RU heights. The cabinets are welded 16-gauge CRS with heavy-duty casters and are fully assembled for immediate use.

Each cabinet is equipped with one front pair of 12-gauge, CRS adjustable mounting rails tapped 10-32 on standard E.I.A. 5/8" - 5/8" - 1/2" spacing. Front-to-rear mounting rail supports have slotted cutouts to easily adjust rail depth and to provide open raceways for containing vertically run wire and cable.

Cabinets feature one pair of recessed, hinged, and rubber-padded steel grips on each side (four total) for transport convenience. Easy wiring access is provided through three wire isolation holes (two, 1-1/2" diameter, and one oblong 1-1/2" x 3") in the rear base flange.

Each cabinet includes four, oversized, heavy-duty casters, two of which are locking, ensuring smooth mobility, and have a load capacity of 175 lb. each (700 lb. total).

Models with "SFD" suffix include locking solid front door and locking vented rear door.

Models without "SFD" suffix include locking vented rear door only to accommodate optional perforated or plexiglass front doors as required.

Cabinet is finished in textured black epoxy.

LINE ARRAY SPEAKERS

APPLICATIONS

Atlas line array speaker systems are ideal for a variety of live music and vocal applications. Their small form factor and available wheel board make them easy to set-up in almost any situation including house of worship, club / theater, corporate AV, and outdoor venue installations.

FEATURES

- Highly Intelligible with Natural Sound Reproduction
- Sleek Design Incorporates Into Any Architecture
- Scalable Design
- Great Gain Before Feedback
- Easy to Transport and Set-Up

GENERAL DESCRIPTION

AtlasIED offers model AL123A-B, a powered large format line array system. This array is highly intelligible with wide coverage and high impact. AL123A cabinets are tri-amplified with a total of 3600 Watts on board power. The DSP in each cabinet is network controlled, allowing precise tuning of the array system. Enclosures feature AtlasIED's exclusive integrated EZAL™ rigging system for faster, safer, and easier set up. Up to eight boxes can be individually aimed under load, while flown or stacked, by just one or two people. Made in the USA with the highest-grade components, AL123 cabinets are constructed of birch plywood with threaded fittings for attachment of speakers, LSRs, rigging and amplifiers.

The EMMA active, modular line array system is a highly intelligible, high efficiency 3-way speaker system ideally suited for use in speech and music reproduction applications like houses of worship, theaters and concert halls. The system consists of two parts: the EM806A-B, which includes eight 6-1/2" high frequency ribbon drivers and eight 6-1/2" low / mid frequency drivers and the EMW410A-B, which includes four 10" subwoofers. An integrated class-D amplifier with pre-configured DSP powers each unit, 1500 watts RMS in the EM806A-B and 1000 watts RMS in the EMW410A-B. Both models utilize an optimally designed Baltic birch enclosure. The trim line, two cabinet design allows the units to be stacked to create a sleek, clean looking set up with minimal sightline interference. AtlasIED additionally offers the EMMA2K-B package, which includes two (2) EM806A-B, two (2) EMW410A-B, two (2) EMWB wheel boards, and all connectors needed to set the units up. Each EMMA line array system is made in the AtlasIED manufacturing facility in Monroe, WI USA.

The ELIJAH line array speaker system is a highly intelligible, high efficiency speaker system that is ideally suited for use in speech and music reproduction applications houses of worship, theaters, and schools. The system consists of two parts: the EJ2003-B, which includes twenty proprietary 3" drivers, and the EJW115, which is a single 15" low

Line array speaker systems allow the sound to be focused on the audience area, keeping the sound off the ceiling, the wall behind the audience and the areas above, behind and below the array.

frequency driver. Both models utilize an optimally designed Baltic birch constructed enclosure. The EJW115A-B houses an integrated 1000-watt class-D amplifier that includes onboard DSP. The EJW115A-B is designed to provide power to the EJW115X-B and the two EJ2003-B arrays. Each unit is finished in heavy duty black Duracoat™ and the trim line, two cabinet design allows for sleek, clean looking set ups with minimal sightline interference. Atlas also offers each ELIJAH model in a fixed install version (I) in both black and white. The ELIJAH2K-B package, which includes two (2) ELJ2003-B, one (1) ELW115A-B, one (1) ELW115X-B, two (2) mounting poles, and all power and speaker cables are included. Input cables are available through the Atlas Signal line.

The ELI line array speaker system is a highly intelligible, high efficiency speaker system that is ideally suited for use in speech and music reproduction applications houses of worship, theaters, and schools.

The system consists of two parts: the EL1503-B, which includes fifteen proprietary 3" drivers, and the ELW110, which is a single 10" low frequency driver. Both models utilize an optimally designed Baltic birch constructed enclosure. The ELW110A-B houses an integrated 200-watt class-D amplifier that includes onboard DSP. The ELW110A-B is designed to provide power to the ELW110X-B and the two EL1503-B arrays. Each unit is finished in heavy duty black Duracoat™ and the trim line, two cabinet design allows for sleek, clean looking set ups with minimal sightline interference. Atlas also offers each ELI model in a white finish (-W) as well as a fixed install version (I) in both black and white. The ELI2K-B package, which includes two (2) ELJ2003-B, one (1) ELW115A-B, one (1) ELW115X-B, two (2) mounting poles, and all power and speaker cables are included. Input cables are available through the Atlas Signal line.

The SW118A and SW118X are single 18" subwoofer models designed to work in conjunction with an EJ2003-B or EL1503-B in applications where more bass is required. The SW118A includes an integrated 1000-watt class-D amplifier that includes onboard DSP. This amplifier is designed to power the passive SW118X when more than one unit are being used. Each unit is finished in heavy duty black Duracoat™. Atlas also offers each SW model in a fixed install version (I) in both black and white.

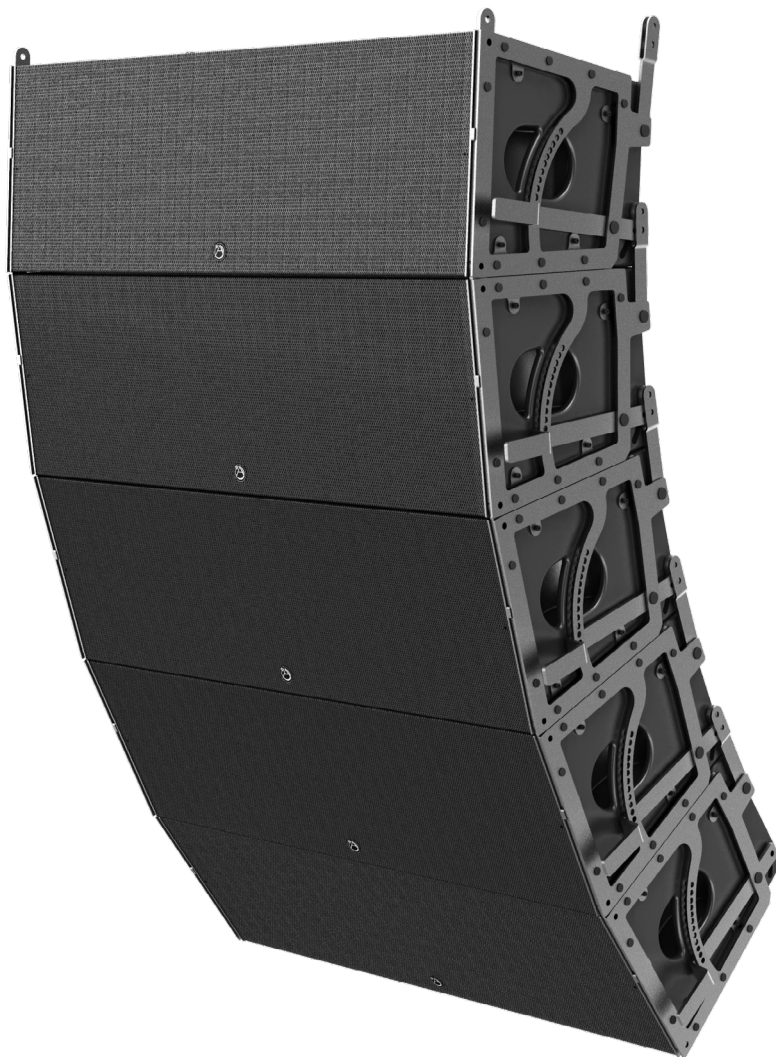
AL123A

FEATURES

- 3-Way Full Range Speaker System
- Two 12" Low Frequency Drivers
- Four 6" Midrange Drivers
- Two 1.4" High Frequency Drivers
- Baltic Birch Cabinet Construction
- EZAL™ Rigging System
- Finished in Heavy Duty Black Duracoat™

SPECIFICATIONS

Total Power	3600 Watts RMS
LF Driver Power	2400 Watts RMS
MR Driver Power	600 Watts RMS
HF Driver Power	600 Watts RMS
Impedance	4Ω LF / 4Ω MR / 8Ω HF
MAX SPL	136dB
Freq Response	70Hz - 18kHz (±3dB)
Connectors	I/O PowerCON™ and M&F XLR
Height	13.9" (353mm)
Width	45.3" (1151mm)
Depth	16.3" (414mm)
Weight	133 lbs (60.33 kg)



Line array speaker systems provide excellent coverage in live music applications.

EMMA2K

FEATURES

- Two EM806A
- Two EM410A
- Two EMWB Wheel Board Assemblies
- Mounting Poles
- Power and Speaker Cables

EM806A
EM410A

EM806A

FEATURES

- Eight 6-1/2" Midrange Drivers
- Eight 6-1/2" High Frequency Ribbon Drivers
- Integrated 1500W Class D Amplifier
- Integrated Carrying Handles for Easy Transport
- Finished in Heavy Duty Duracoat™
- Available in Black and White

SPECIFICATIONS

Total Power	1500 Watts RMS
MR Driver Power	1000 Watts RMS
HF Driver Power	500 Watts RMS
MAX SPL 3'	130dB
Freq Response	90Hz - 19kHz
Crossover Freq	90Hz / 125Hz Up to 2kHz
Horiz Dispersion	120°
Height	54.6" (139mm)
Width	13.1" (333mm)
Depth	9.4" (239mm)
Weight	105 lbs (47.63 kg)

EM410A

FEATURES

- Four 10" Subwoofers
- Integrated 1000W Class D Amplifier
- Integrated Carrying Handles for Easy Transport
- Finished in Heavy Duty Duracoat™
- Available in Black and White

SPECIFICATIONS

Total Power	1000 Watts RMS
MAX SPL	128dB
Freq Response	40Hz - 125Hz
Crossover Freq	90Hz / 125Hz
Horiz Dispersion	Omni
Height	48.8" (124mm)
Width	13.1" (333mm)
Depth	19.0" (483mm)
Weight	97 lbs (44.00 kg)



EMMA systems are designed to cover large areas and deliver highly intelligible speech and live music.

ELIJAH2K

FEATURES

- Two EJ2003
- One EJW115A
- One EJW115X
- Mounting Poles
- Power and Speaker Cables

EJ2003

EJW115A / EJW115X

EJ2003

FEATURES

- Twenty Proprietary 3" Full Range Speakers
- Excellent Pattern Control to 115Hz Vertically
- Sealed Baltic Birch Cabinet Design
- NL4 Speakon Connectors
- Finished in Heavy Duty Duracoat™
- Available in Black and White

SPECIFICATIONS

Total Power	500 Watts RMS
Impedance	8Ω
MAX SPL 3'	110dB
Freq Response	125Hz - 16kHz
Height	65.6" (167mm)
Width	4.8" (122mm)
Depth	6.4" (163mm)
Weight	30 lbs (13.61 kg)

EJW115A / EJW115X

FEATURES

- Single 15" Subwoofer
- Integrated 500W RMS Class D Amplifier (EJW115A)
- Passive Subwoofer System (EJW115X)
- NL4 Speakon Connectors
- Finished in Heavy Duty Duracoat™
- Available in Black and White

SPECIFICATIONS

Amplifier Power	1000 Watts RMS (EJW115A)
Total Power	500 Watts RMS (EJW115X)
Impedance	8Ω
Freq Response	50Hz - 150Hz
Horiz Dispersion	Omni
Height	21.6" (549mm)
Width	18.25" (464mm)
Depth	19.4" (493mm)
Weight	65 lbs (29.48 kg) (EJW115A) 55 lbs (24.95 kg) (EJW115X)



ELIJAH systems excel at reproducing both vocal and live music signals.

ELI2K

FEATURES

- Two EL1503
- One ELW110A
- One ELW110X
- Mounting Poles
- Power and Speaker Cables



EL1503

FEATURES

- Fifteen Proprietary 3" Speakers
- Excellent Pattern Control to 300Hz
- Sealed Baltic Birch Cabinet Design
- NL4 Speakon Connectors
- Finished in Heavy Duty Duracoat™
- Available in Black and White

SPECIFICATIONS

Total Power	200 Watts RMS
Impedance	8Ω
MAX SPL 3'	107dB
Freq Response	60Hz - 16kHz
Height	49.0" (125mm)
Width	4.25" (108mm)
Depth	6.375" (162mm)
Weight	23 lbs (10.43 kg)

ELW110A / ELW110X

FEATURES

- Single 10" Subwoofer
- Integrated 200W RMS Class D Amplifier (ELW110A)
- Passive Subwoofer System (EJW115X)
- NL4 Speakon Connectors
- Finished in Heavy Duty Duracoat™
- Available in Black and White

SPECIFICATIONS

Amplifier Power	1000 Watts RMS (ELW110A)
Total Power	500 Watts RMS (ELW110X)
Impedance	8Ω
Freq Response	49Hz - 160Hz
Horiz Dispersion	Omni
Height	17.5" (445mm)
Width	13.0" (330mm)
Depth	17.5" (445mm)
Weight	33 lbs (14.97 kg) (ELW110A)
	30 lbs (13.61 kg) (ELW110X)



ELI systems are designed to deliver highly intelligible vocal reproduction in small to medium sized venues.

SW118A

FEATURES

- Single 18" Subwoofer
- Integrated 500W RMS Class D Amplifier
- NL4 Speakon Connectors
- Finished in Heavy Duty Duracoat™
- Available in Black and White

SPECIFICATIONS

Amplifier Power	500 Watts RMS
Impedance	8Ω
Freq Response	40Hz - 125Hz
Crossover Freq	40Hz - 125Hz
Sensitivity	97.5dB
Height	25.13" (638mm)
Width	22.5" (571mm)
Depth	20.18" (513mm)



SW118A-B

SW118X

FEATURES

- Single 18" Subwoofer
- Passive Subwoofer System
- NL4 Speakon Connectors
- Finished in Heavy Duty Duracoat™
- Available in Black and White

SPECIFICATIONS

Total Power	500 Watts RMS
Impedance	8Ω
Freq Response	40Hz - 125Hz
Crossover Freq	40Hz - 125Hz
Sensitivity	97.5dB
Height	25.13" (638mm)
Width	22.5" (571mm)
Depth	20.18" (513mm)



SW118X-W



SW118 subwoofers can be combined with any line array full range speaker for incredible low frequency reproduction.

POWERED SPEAKERS

APPLICATIONS

AtlasIED SMA and SMP speakers feature a 2-way design that delivers high fidelity sound that can be used in a variety of applications including cafeterias, classrooms, restaurants/bars, DJs, and other applications where sound reinforcement of live or recorded music or vocals are required.

FEATURES

- Single Woofer and Compression Driver 2-Way Speaker Design
- Amplified and Passive Models Available
- 12" and 15" Woofer Models Available
- Enclosed Cabinet
- High Frequency, Mid Frequency, and Low Frequency Adjustments
- RCA, XLR, and 1/4" Mic Inputs for a Variety of Sources

GENERAL DESCRIPTION

The AtlasIED SMA-12 and SMA-15 are 2-way powered speakers that include a single woofer, 12" or 15", and a high frequency, horn style compression driver. Each unit features an integrated class-D amplifier that includes RCA, XLR, and 1/4" mic inputs. While most commonly used as main speakers, the wide frequency response and adjustability of this series make them ideal for use as stage monitor speakers for concerts or productions.

The SMA-12 and SMA-15 also feature a Speak-On output for connecting to another SMA model or to a passive SMP model. The SMP-12 and SMP-15 are passive models that feature the same 2-way design as the powered versions but are designed to be used in conjunction with a powered SMA version. Each cabinet includes a Speak-On™ connector for connecting to the powered version making them easy to install and share a source with.

Powered speakers are an economical, easy to use and install solution that can be implemented in a wide variety of applications where fixed install is not a requirement.



Atlas powered speakers are perfect for fixed installations like restaurants and bars as well as for mobile DJs.

WALL PLATES AND FLOOR BOXES

APPLICATIONS

Professional appearance and ease of use are achieved using the variety of wall plates that are available through AtlasIED for applications including auditoriums, conference rooms, ballrooms, and other applications where microphones, cables, or speaker connections are required.

FEATURES

- Wall Plates and Floor Boxes

GENERAL DESCRIPTION

AtlasIED offers both single and dual XLR wall plates in both male and female connector configurations. These plates are designed to provide wall access for microphones, speakers, or other devices that require an XLR connection to remote mixer or amplifier. Additionally, AtlasIED offers an HXLP cable connector in both male and female configurations for connecting XLR and A3 style connectors.

Additionally AtlasIED offers single and dual NL4MP wall plates for remote connection of speakers or other devices that need to be remotely connected to required components. The SG-QTRSL-F2 features two female locking TRS connectors. The SG-38GH is designed to allow through wall routing of $\frac{3}{8}$ " cabling from remote components for easy connection.

The FB4-XLRF floor box assembly provides a simple solution for recessed mic inputs. The unit is designed for easy installation into wood stages and platforms. Four (4) Female XLR connectors are recessed and slant loaded into the enclosure. A hinged steel cover plate provides protection for cable connectors. Connectors are standard "D sub" type and may be easily removed to allow substitution of other "D sub" devices. May be used in concrete pour applications with the optional FB4CPB pour box.

FB4XLRF

FEATURES

- Attractive Black Finish
- Hinged Steel Cover To Protect Cable Connectors
- Preloaded With 4 XLR "D Sub" Style Connectors

SPECIFICATIONS

Height	7.94" (202mm)
Width	7.94" (202mm)
Depth	2.63" (67mm)
Shipping Weight	4.00 lbs (1.81 kg)



AtlasIED wall and floor plates provide flexibility for room configuration and use.

FB4CPB

FEATURES

- 16GU Construction
- Durable Galvanized Steel Construction
- Four Compound Combination Knockouts ($1/2"$ - $3/4"$, 13mm - 19mm)
- Unpainted Finish

SPECIFICATIONS

Height	6- $1/8"$ (156mm)
Width	6- $1/8"$ (156mm)
Depth	4" (102mm)
Shipping Weight	4.00 lbs (1.81 kg)



SG-XLR-F1

FEATURES

- Female 3 Conductor
- Perfect for Remote Microphone Applications
- Wall / Panel Receptacle

SPECIFICATIONS

Height	4- $3/4"$ (121mm)
Width	2- $15/16"$ (532mm)
Shipping Weight	0.50 lbs (0.23 kg)



HXLP-3-11

FEATURES

- A3F or Equal
- Cable Connector
- Female 3 Conductor

SPECIFICATIONS

Connector Type	A3F
Shipping Weight	0.50 lbs (0.23 kg)



HXLP-3-12

FEATURES

- A3M or Equal
- Cable Connector
- Male 3 Conductor

SPECIFICATIONS

Connector Type	A3M
Shipping Weight	0.22 lbs (0.10 kg)



SG-XLR-F2

FEATURES

- 2 Female 3 Conductors
- Perfect for Remote Microphone Applications
- Wall / Panel Receptacle

SPECIFICATIONS

Height	4-3/4" (121mm)
Width	2-15/16" (532mm)
Shipping Weight	0.50 lbs (0.23 kg)



SG-XLR-M1

FEATURES

- Male 3 Conductors
- Perfect for Remote Microphone Applications
- Wall / Panel Receptacle

SPECIFICATIONS

Height	4-3/4" (121mm)
Width	2-15/16" (532mm)
Shipping Weight	0.50 lbs (0.23 kg)



SG-XLR-M2

FEATURES

- 2 Male 3 Conductors
- Perfect for Remote Microphone Applications
- Wall / Panel Receptacle

SPECIFICATIONS

Height	4-3/4" (121mm)
Width	2-15/16" (532mm)
Shipping Weight	0.50 lbs (0.23 kg)



SG-38GH

FEATURES

- 3/8" Hole and Grommet
- Perfect for Applications When Cabling Needs to Penetrate Walls
- Wall / Panel Receptacle

SPECIFICATIONS

Height	4-3/4" (121mm)
Width	2-15/16" (532mm)
Shipping Weight	0.50 lbs (0.23 kg)



SG-NL4MP-1

FEATURES

- NL4MP 4 Pole Connector
- Perfect for Remote Speaker Level Input / Output Applications
- Wall / Panel Receptacle

SPECIFICATIONS

Height	4-3/4" (121mm)
Width	2-15/16" (532mm)
Shipping Weight	0.50 lbs (0.23 kg)



SG-NL4MP-2

FEATURES

- 2 NL4MP 4 Pole Connectors
- Perfect for Remote Speaker Level Input / Output Applications
- Wall / Panel Receptacle

SPECIFICATIONS

Height	4-3/4" (121mm)
Width	2-15/16" (532mm)
Shipping Weight	0.50 lbs (0.23 kg)



SG-QTRSL-F1

FEATURES

- 1 Female Locking TRS Connector
- Perfect for Remote Microphone Applications
- Wall / Panel Receptacle

SPECIFICATIONS

Height	4-3/4" (121mm)
Width	2-15/16" (532mm)
Shipping Weight	0.50 lbs (0.23 kg)



SG-QTRSL-F2

FEATURES

- 2 Female Locking TRS Connectors
- Perfect for Remote Microphone Applications
- Wall / Panel Receptacle

SPECIFICATIONS

Height	4-3/4" (121mm)
Width	2-15/16" (532mm)
Shipping Weight	0.50 lbs (0.23 kg)



