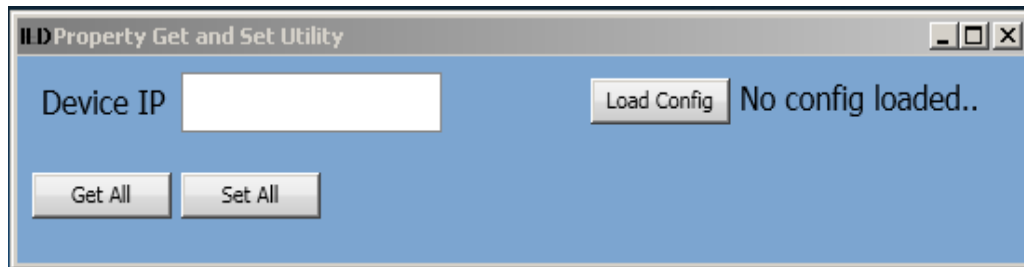
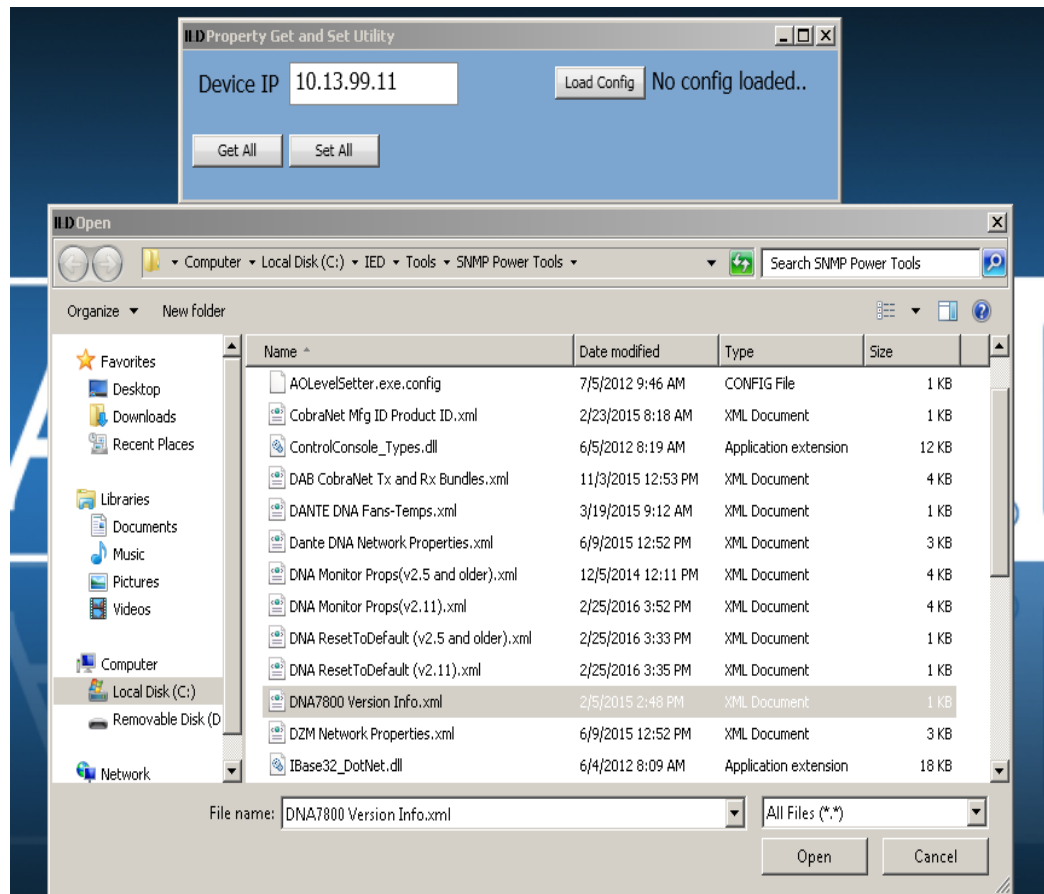


# Resetting a CobraNet DNA Amp Frame to Factory Defaults

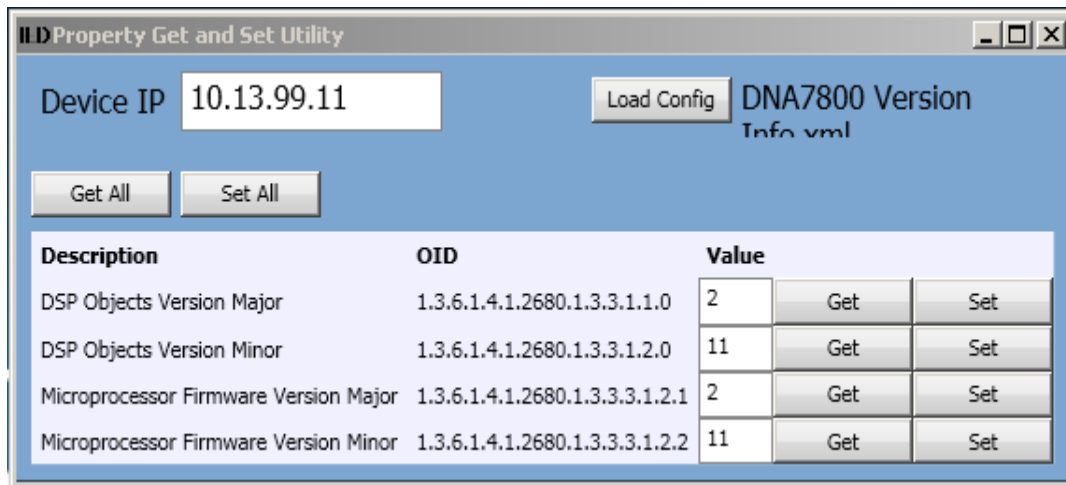
1. Use the “SNMPGetSet” application to determine the version of the DNA amp frame.
  - a. Run the “SNMPGetSet” application (c:\IED\Tools\SNMP Power Tools\SNMPGetSet.exe).



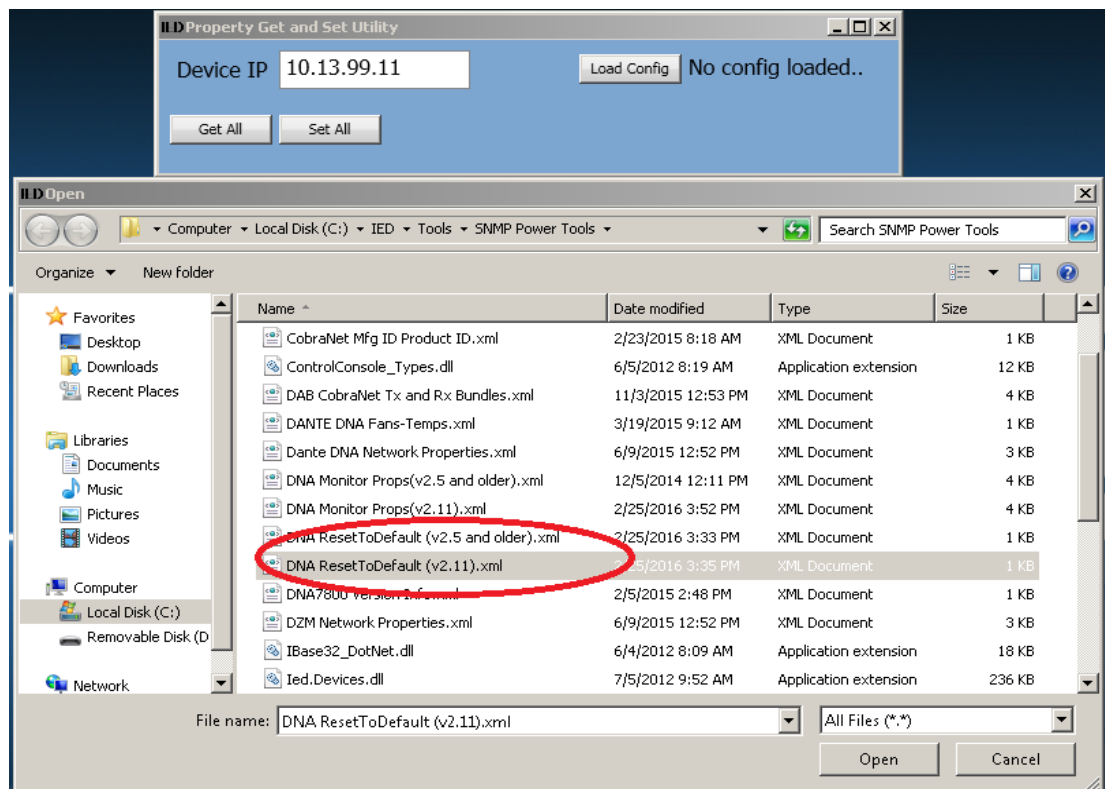
- b. Input the IP address of the DNA amp frame in the **Device IP** edit box. Next, press the “Load Config” button to open a file browser. In the file browser, find and open the “DNA7800 Version Info.xml” file.



- c. Press the “Get All” button to retrieve the version information from the DNA amp frame. Make a note of the DSP Objects Version (Major.Minor). In the example below, the DNA is version 2.11.



- d. Close the “SNMPGetSet” application.
2. Use the “SNMPGetSet” application to reset the frame to factory defaults.
    - a. Run the “SNMP GetSet” application.
    - b. Input the IP address of the DNA amp frame in the **Device IP** edit box. Next, press the “Load Config” button to open a file browser. In the file browser, find and open the “DNA ResetToDefault.xml” file for the correct DNA version.



- c. If you are working with an older DNA frame (v2.5 or older) populate the value field with a 1 (or any non-zero value) and press the “Set” button. If you are working on a newer DNA frame (v2.11 or newer), populate the value field with 23205 and press the “Set” button.

Description	OID	Value
Reset to Default (v2.11)	1.3.6.1.4.1.2680.1.4.2.4.32.20.25.40.4.2.1.2.518	23205

- d. Finally, close the “SNMPGetSet” application, wait 30 seconds to one minute (to allow time for new values to be written to flash) before continuing with setup or powering the frame off.