



LC372M REMOTE MICROPHONE MODULE

Installation Instructions

INTRODUCTION

The LC372M remote microphone is an optional component of the IED LANcom SCS system for use with the LC372SR communications module. This microphone unit is for remote use in classrooms for intercom.

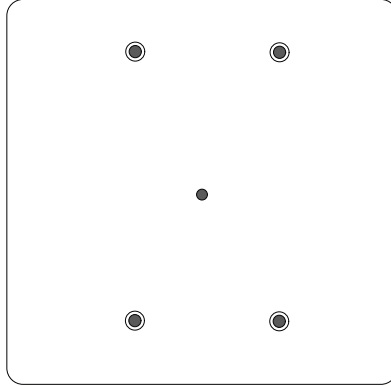


Figure 1 - LC372M Front View

IMPORTANT SAFETY INSTRUCTIONS

<ol style="list-style-type: none"> 1. Read these instructions. 2. Keep these instructions. 3. Heed all warnings. 4. Follow all instructions. 5. Do not use this apparatus near water. 6. Clean only with dry cloth. 7. Install in accordance with the manufacturer's instructions. 8. Do not install near any heat sources such as radiators, heat registers, stoves, or other apparatus (including amplifiers) that produce heat. 9. Only use attachments/accessories specified by the manufacturer. 10. Refer all servicing to qualified service personnel. Servicing is required when the apparatus has been damaged in any way, such as power-supply cord or plug is damaged, liquid has been spilled or objects have fallen into the apparatus, the apparatus has been exposed to rain or moisture, does not operate normally, or has been dropped. 	<h3>SAFETY SYMBOLS</h3> <p>Labeling on products and the <i>Installation Instructions & User Manual</i> may use safety related graphical symbols as shown below to note safety requirements.</p> <p>⚡ Lightning Bolt: The lightning flash with arrowhead symbol, within an equilateral triangle, WARNING symbol, is intended to alert the user to the presence of un-insulated dangerous voltage within the product's enclosure that may be sufficient in magnitude to constitute a risk of electric shock to persons or domestic animals.</p> <p>⚠ Exclamation Point: The exclamation point within an equilateral triangle, CAUTION symbol, is in-tended to alert the user to the presence of important operating and maintenance (servicing) instructions, or a hazard that can damage equipment.</p> <p>Do not proceed beyond a WARNING or CAUTION notice until you have understood the hazardous condition and have taken appropriate steps.</p>
--	--

CONNECTIONS

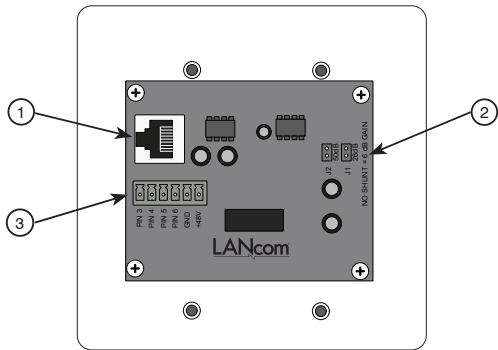


Figure 2 - LC372M Rear View

1. Output RJ45 Connector

This connector is used to send the audio from the microphone and any third-party pushbutton call switches to an LC372SR or LC331IC. See Table 2 for the connector wiring details.

2. Gain Selection Jumpers

These jumpers are used to adjust the microphone gain. Use higher gain settings when the microphone is not picking up intercom calls in the room.



CAUTION – Do not place shunts on both J1 and J2 at the same time. Doing so may result in damage to the equipment.

Pin	Function
No Shunt	6 dB of gain
J1	26 dB of gain
J2	50 dB of gain
J1+J2	Not Allowed

Table 1 - Gain Jumper Settings

3. Auxiliary Connector

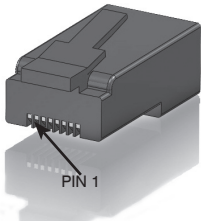
This connector provides termination points when using pushbutton call switches from other manufacturers. A momentary switch can be wired to one of the four available control lines and ground. A voltage test point (+48VDC) is provided as an aid in troubleshooting. Refer to Figure 3 for wiring instructions.

RJ45 Connector Wiring

Each unit connects to either an LC372SR Sound Reinforcement Module or LC331IC Integrated Communications Module using CAT5 or better structured cable. Each connector should be wired as shown in Table 2.

Pin	Function	Cat5 Color Code
1	Audio +	Orange /W
2	Audio -	Orange
3	Switch out	Green /W
4	Switch out	Blue
5	Switch out	Blue/W
6	Switch out	Green
7	+48 VDC	Brown /W
8	Ground	Brown

Table 2 - RJ45 Connector Wiring



Control Pin Functions

The Auxilliary Connector allows a remote pushbutton switch manufactured by others to be used as a remote call switch in the system. Each switch must be wired to one of the four available control lines. Multiple buttons can be connected to the same control line when necessary. The function of each control line is listed in Table 3. The functions may be globally modified in the LANcom SCS software. Control line 6 is configured in software to perform actions such as closing a relay that can be used to raise and lower a projection screen or blinds.

Pin	Function
3	Normal intercom call request
4	Emergency intercom call request
5	Lockdown acknowledgement
6	Software-configurable action

Table 3 - Control Pin Functions

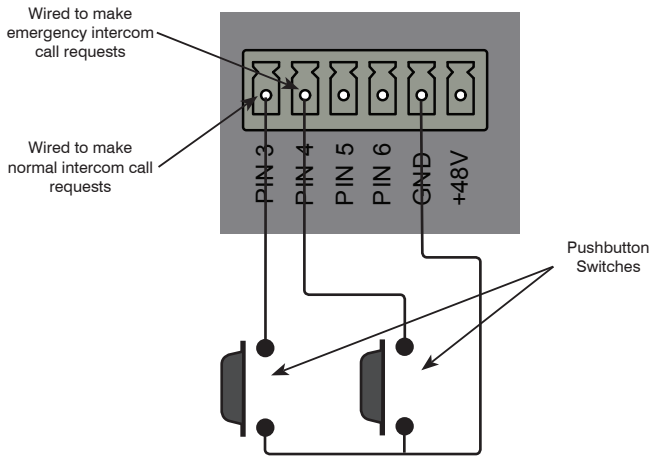


Figure 3 - Pushbutton Switch Wiring

Specifications

Mechanical	
Dimensions	4.5" W x 4.5" H x 1.06" D (114.3mm W x 114.3mm H x 27mm D)
Projection in Front of Plate	0.013" (32mm)
Mounting Depth	1.00" (25.4mm)
Mounting Box.....	2-Gang Deep Box
Recommended Electrical Box	Steel City 52151-1/2-3/4 (4" x 4" Box) with 53151-1/2 Extension
Electrical	
Power	48VDC, 12.5 mA
Max. Audio Output.....	+27dBu
THD	<= 0.0033%
Frequency Response.....	-3dB @ 75Hz – 10kHz, -20dB @ 20kHz
Gain (Jumper Selectable).....	+52.7dB, +27.5dB or +6.6dB
S/N @ 53dB gain (+24dBu output)	89dB
S/N @ 26dB gain (+24dBu output)	110dB
S/N @ 6dB gain (+24dBu output)	120dB
Connectors	
Power and Audio Out.....	RJ45
Connects to LC372SR or LC3311C using CAT5 or better	
** Do not use an RJ45 boot in the box at the module end **	

CONNECTION DIAGRAM

