

AtlasIED Application Note

Scheduled Task to Auto Close Microsoft Internet Explorer

Ver 1.0 29 August 2018

Background

A known deficiency in many versions of Microsoft Internet Explorer (IE) is that it has memory leaks. If left running for a long period of time, it will eventually consume all of the available Windows resources, possibly impacting operation of the background GLOBALCOM tasks. For this reason, AtlasIED ships controllers like the 1200ACS and IP108 with a Windows scheduled task that logs the user out after over an hour of idle time (task Auto Logoff).

However, there are some special installations, where the Auto Logoff task must be disabled because it closes ALL desktop applications, rather than just IE. There are situations where one or more special applications must be left running, such as the Telecite Display Driver software for New York City Transit stations. Therefore logging off is not an option. Instead, a scheduled task should be added to the system to prevent any users from leaving IE running indefinitely. How to do this is described in this application note.

Creating the New Scheduled Task

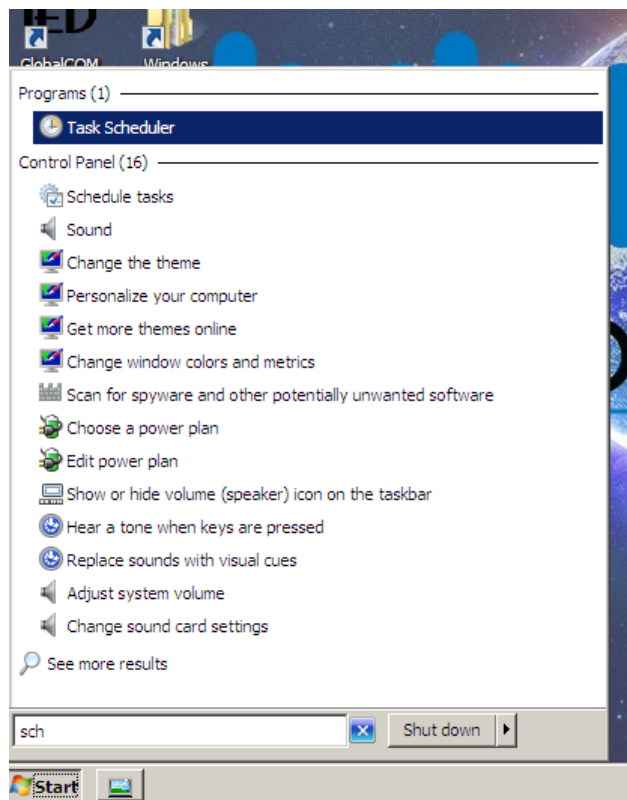
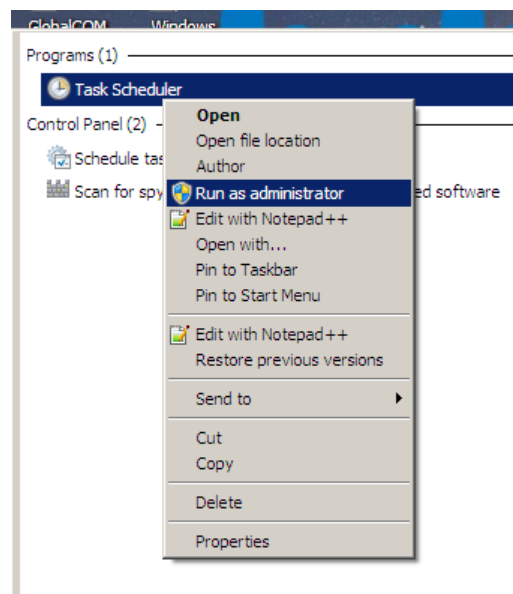
The easiest way to create the Auto Close IE task is to import the XML file that defines the task. This file (Auto Close IE.XML) is listed at the end of this application note, so that it can be easily re-created should it not be available to the reader of this document. Simply highlight the text in the document and paste it into an editor such as Notepad and save it as "Auto Close IE.XML". Alternately, a knowledgeable Windows user can manually create the task using settings shown in this export XML file. The steps to follow when using the XML file are as follows:

1. Run Windows Task Scheduler
2. Import the task XML file, optionally modifying any settings
3. Close Task Scheduler

Run Windows Task Scheduler

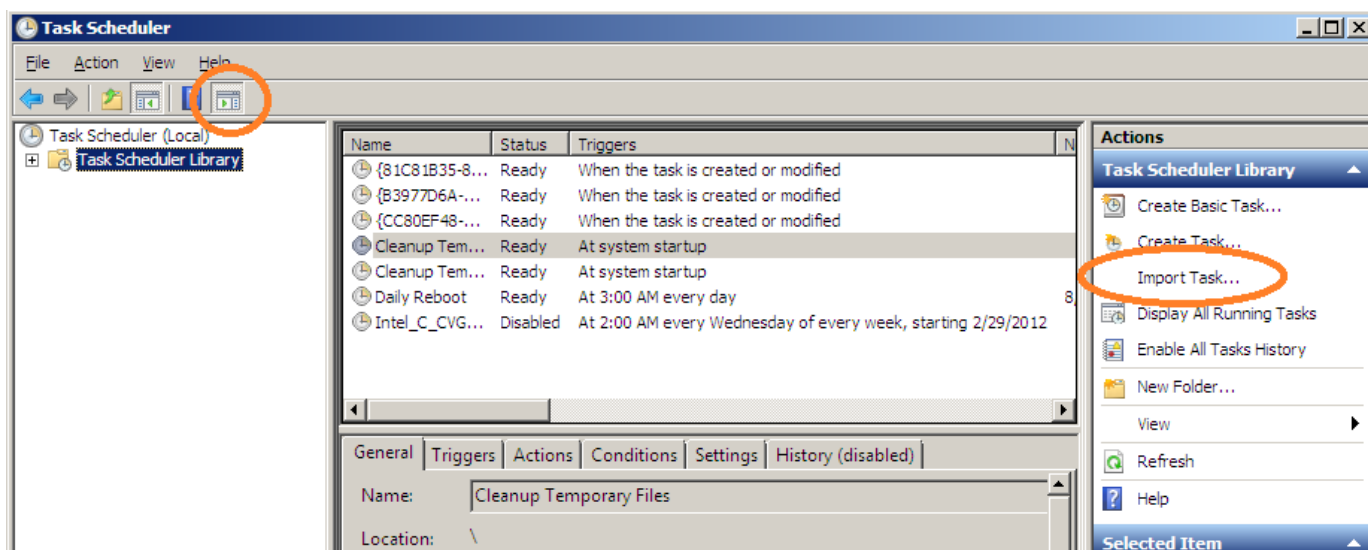
The easiest way to run the Task Scheduler is to hit the Windows key on the keyboard (⊞) and start typing the word “schedule”. After a few characters Windows will suggest the Task Scheduler as shown in the screenshot at right. Simply click on the Task Scheduler program. On an AtlasIED provided controller when logged in under the default account, one already has administrative privileges, so simply clicking like this is sufficient.

However, if the GLOBALCOM software has been installed on a user-provided server with different user privileges, it may be necessary to explicitly run as administrator. This is done by right-clicking on Task Scheduler program launch suggestion, and selecting “Run as administrator” from the pop-up menu, as shown below.

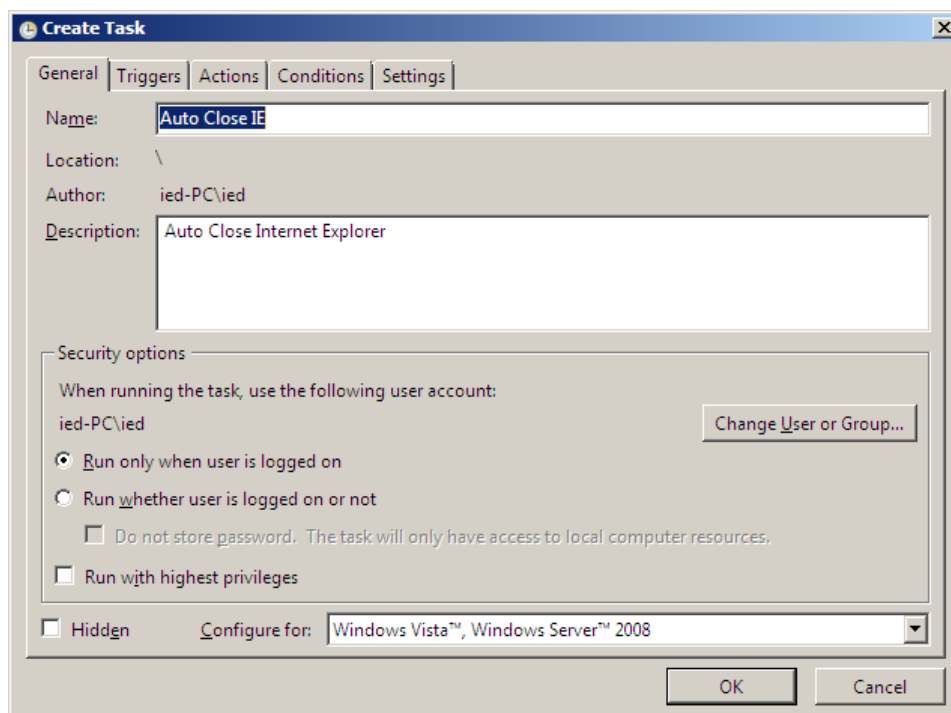


Import the XML Task

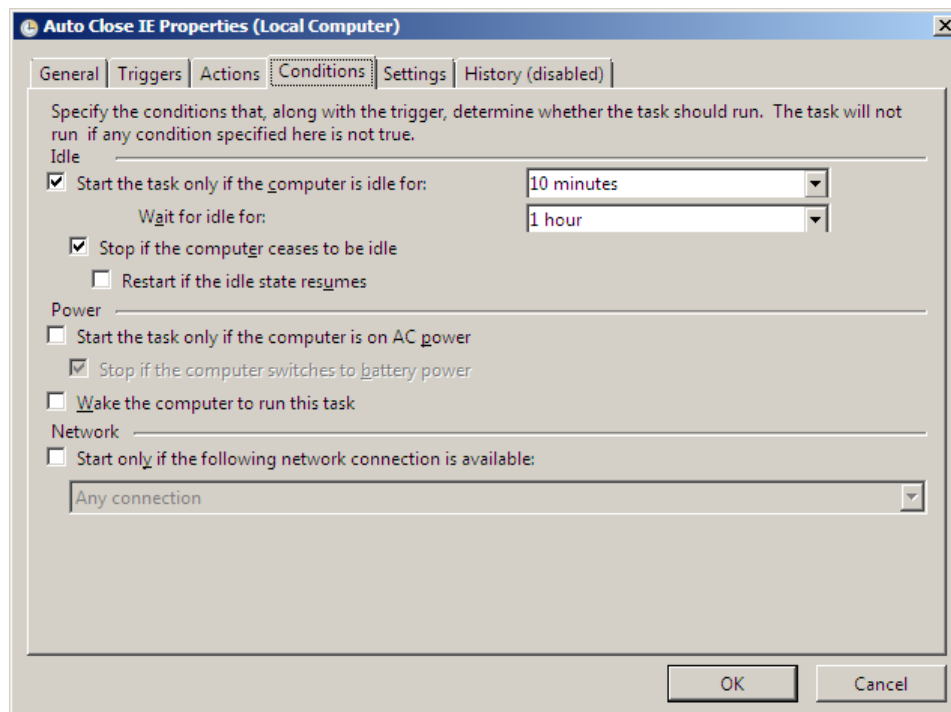
In the Task Scheduler application, one should be sure that the actions panel is displayed (toolbar button highlighted below is depressed). Then, one selects “Import Task...” from the actions panel.



This brings up an open dialog box, from which one can select the XML file to import. When the XML is read in, a Create Task dialog box is displayed such as shown below. One can create the new task as defined in the XML by clicking on the [OK] button.



Optional Step – The timing for the auto close operation is the same that AtlasIED has used for the auto logoff task, 1 hr 10 minutes of inactivity. If one wishes to modify this, a good time to do so is before clicking on the [OK] button. Simply go to the **Conditions** tab in the Create dialog window and modify the times shown. Then click on [OK] when done.



Close Task Scheduler

One can close the Task Scheduler the same as any other desktop app, via the [X] in the upper right corner, or via the File → Exit menu choice.

Auto Close IE XML File

Below are the contents of the XML file that should be imported in this procedure. If the file is not available, one can copy the below contents into a new file (e.g., in Notepad) and save it out as the XML file.

```
<?xml version="1.0" encoding="UTF-16"?>
<Task version="1.2"
xmlns="http://schemas.microsoft.com/windows/2004/02/mit/task">
  <RegistrationInfo>
    <Author>ied-PC\ied</Author>
    <Description>Auto Close Internet Explorer</Description>
  </RegistrationInfo>
  <Triggers>
    <IdleTrigger>
      <StartBoundary>2014-08-28T12:55:24.871</StartBoundary>
      <Enabled>true</Enabled>
    </IdleTrigger>
  </Triggers>
  <Principals>
    <Principal id="Author">
      <UserId>ied-PC\ied</UserId>
      <LogonType>InteractiveToken</LogonType>
      <RunLevel>LeastPrivilege</RunLevel>
    </Principal>
  </Principals>
  <Settings>
    <MultipleInstancesPolicy>IgnoreNew</MultipleInstancesPolicy>
    <DisallowStartIfOnBatteries>>false</DisallowStartIfOnBatteries>
    <StopIfGoingOnBatteries>true</StopIfGoingOnBatteries>
    <AllowHardTerminate>true</AllowHardTerminate>
    <StartWhenAvailable>>false</StartWhenAvailable>
    <RunOnlyIfNetworkAvailable>>false</RunOnlyIfNetworkAvailable>
    <IdleSettings>
      <Duration>PT10M</Duration>
      <WaitTimeout>PT1H</WaitTimeout>
      <StopOnIdleEnd>true</StopOnIdleEnd>
      <RestartOnIdle>>false</RestartOnIdle>
    </IdleSettings>
    <AllowStartOnDemand>true</AllowStartOnDemand>
    <Enabled>true</Enabled>
    <Hidden>>false</Hidden>
    <RunOnlyIfIdle>true</RunOnlyIfIdle>
    <WakeToRun>>false</WakeToRun>
    <ExecutionTimeLimit>P3D</ExecutionTimeLimit>
    <Priority>7</Priority>
  </Settings>
  <Actions Context="Author">
    <Exec>
      <Command>c:\windows\system32\taskkill.exe</Command>
      <Arguments>/F /IM iexplore.exe</Arguments>
    </Exec>
  </Actions>
</Task>
```