

Description

The 528 Interface Designer is an add-on module to IED Enterprise that allows a user to tailor the functions available on the 528 Digital Communication Station. This tool allows the configuration of which softkey options are available to users (by log-in permission) and to define pop-up option lists (called *scrollboxes*) to present the user with additional options for paging or pre-recorded messages from the 528 Digital Communication Stations. When a station is configured to require a user to log in, this utility allows detailed control of the available buttons for each user based on the permissions assigned to that user group.

Configuration Features

Version 1 of the 528 Interface Designer includes the following features:

- Define the size, text label and colors of the on-screen buttons accessible using the softkeys along the side of the 528 screen. More than four buttons can be accessed by scrolling through multiple pages of buttons.
- Define the function of each softkey.
- Define the permissions for each softkey button and each item available in a scrollbox based on assigned user groups.
- Decide whether to allow or block direct entry codes.
- Define the size, title bar caption label, colors and individual list options for scrollboxes.
- Define the function associated with each scrollbox list item.
- Define interface templates which are collections of buttons and scrollboxes to be assigned to one or more 528 Digital Communication Stations.
- Assign interface templates to 528 Digital Communication Stations in the system, and either download to specific mic stations individually (e.g. for testing) or generate the data files for the ACS to use in updating stations that are re-initialized.
- Save interface templates as files for off-line storage, backup and transfer to different systems (e.g., use templates from one installation on another)

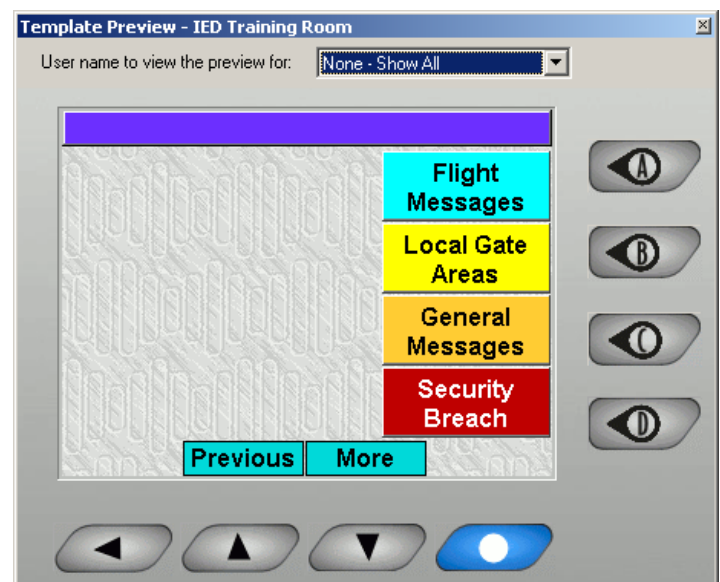
Each button can be directly programmed to access an ACS Entry Code for live page, recorded page, pre-recorded message or flight announcement message. If additional data is needed for the entry code, the interface design will automatically add the necessary prompts and link them accordingly. A button can also be configured to call up a scrollbox

to provide the user with a list of additional options.

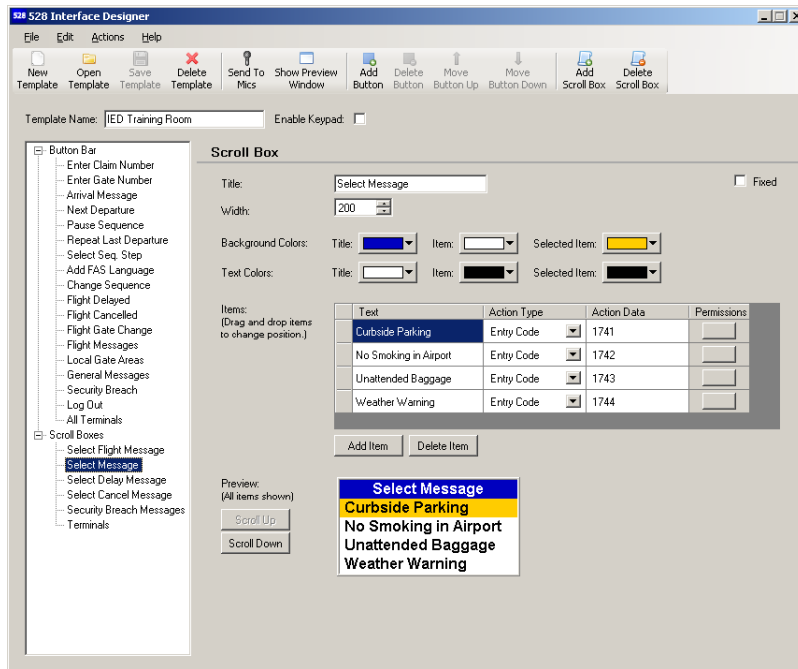
The 528 Interface Designer ties into the IED Enterprise system via the SQL Server database, which allows direct interface to the ACS's, communication stations, and users defined for each system.

System Requirements

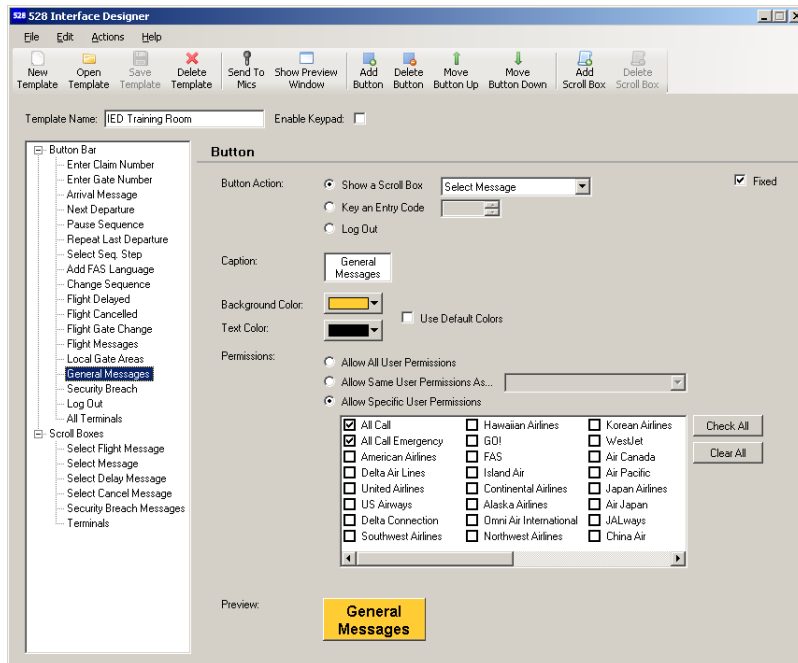
Enterprise requires a machine with Microsoft Windows (as of this writing, Windows Server 2003 or Windows XP), on which has been installed the latest version of Microsoft SQL Server or SQLExpress (part number IED0634), and for the log web page interfaces, Microsoft IIS. The version of windows or SQL that is appropriate as well as the capabilities of the host computer (server) depends on the scale of the system, such as number of clients and amount of real-time data exchange, such as with an airport's operation database (AODB). Consult IED Application Engineering or Sales before finalizing a computer or third-party software choice. All of these elements are available from IED as well, so the system can be delivered as a turn-key solution or computer and all required software, along with the Enterprise software.



528 Microphone Station Display



528 Interface Designer Scroll Box Configuration



528 Interface Designer Button Configuration