

IEDT9160 Upgrade Instructions

Version: 1
Date: 10/30/2013
Document Number: 1101N

Table of Contents

Version History.....	3
Description	4
Replacing the ARM Module in the IEDT9160.....	4
Replacing the CobraNet Module in the IEDT9160	10

Version History

Date	Version	Description	Revised By	Comments
10/30/2013	1	Original	Kimberly Corso	N/A

Description

This document is to be used to upgrade the IEDT9160 amplifier frame to allow it to operate with the new GLOBALCOM system controller.

Replacing the ARM Module in the IEDT9160

1. Turn off the frame and disconnect all external cables. Remove lid screws (12), and set aside. Locate the ARM module (IEDM1000CPU).

Note: Notice the graphic depicts that the front of the frame is facing away from you. The ARM module is located at the top left-hand corner of the DSP Core Board.

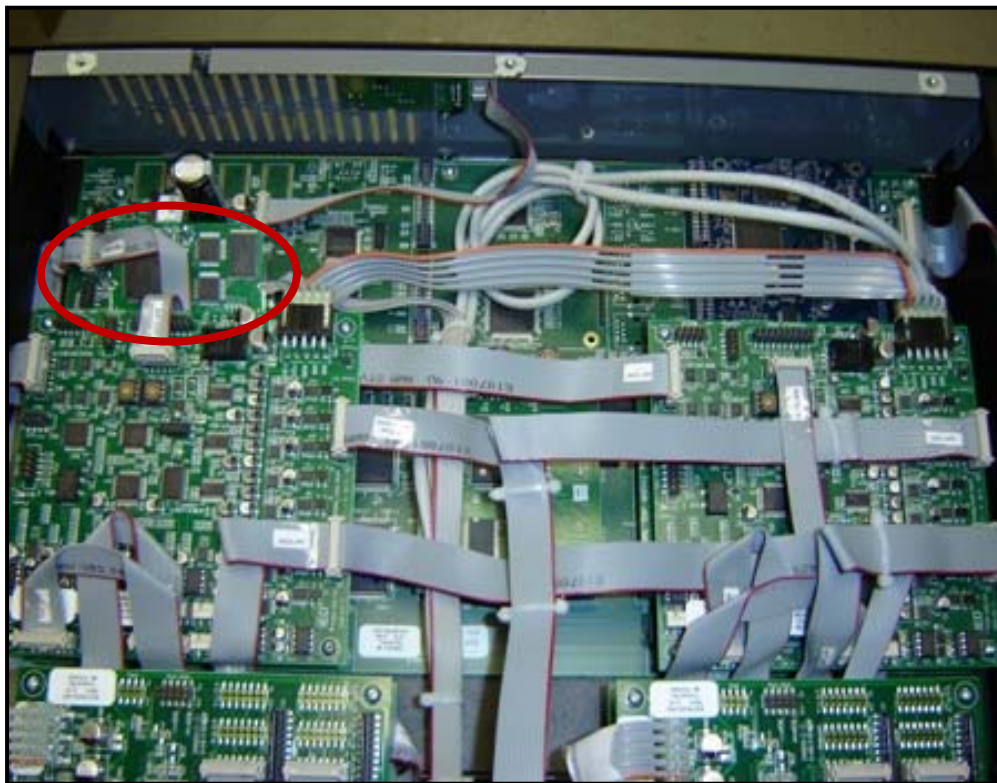


Figure 1

2. **Carefully** move the cable out of the way.

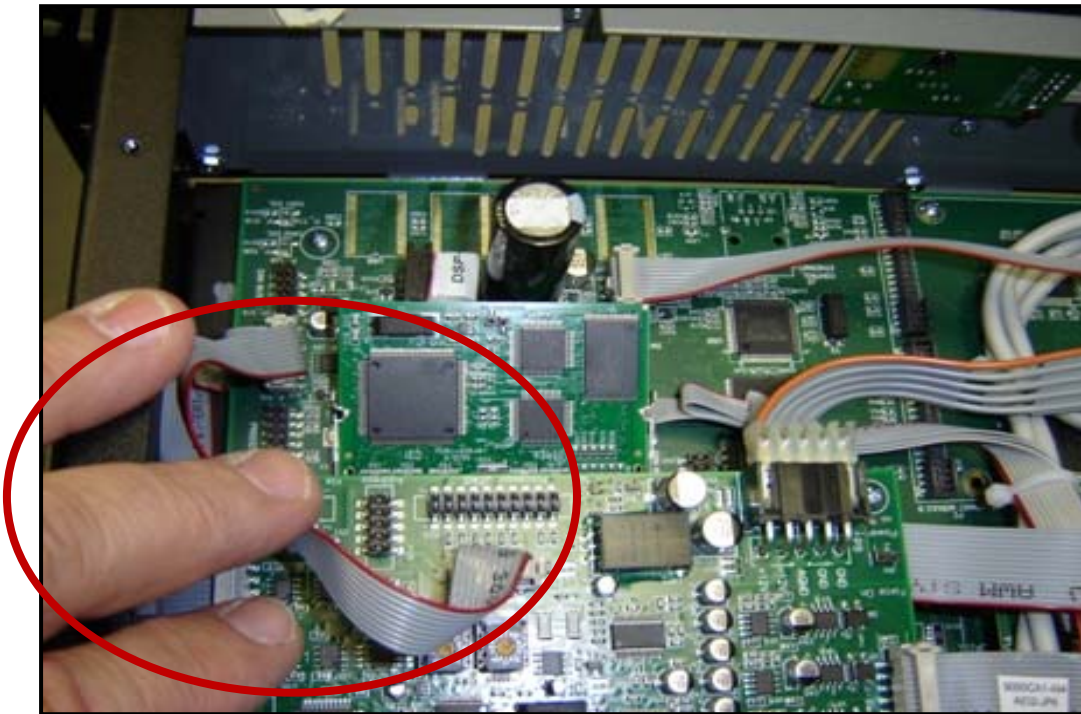


Figure 2

3. Next, remove the ARM module. You can accomplish this by **gently** pulling outward on the two spring-loaded locking arms at the same time.

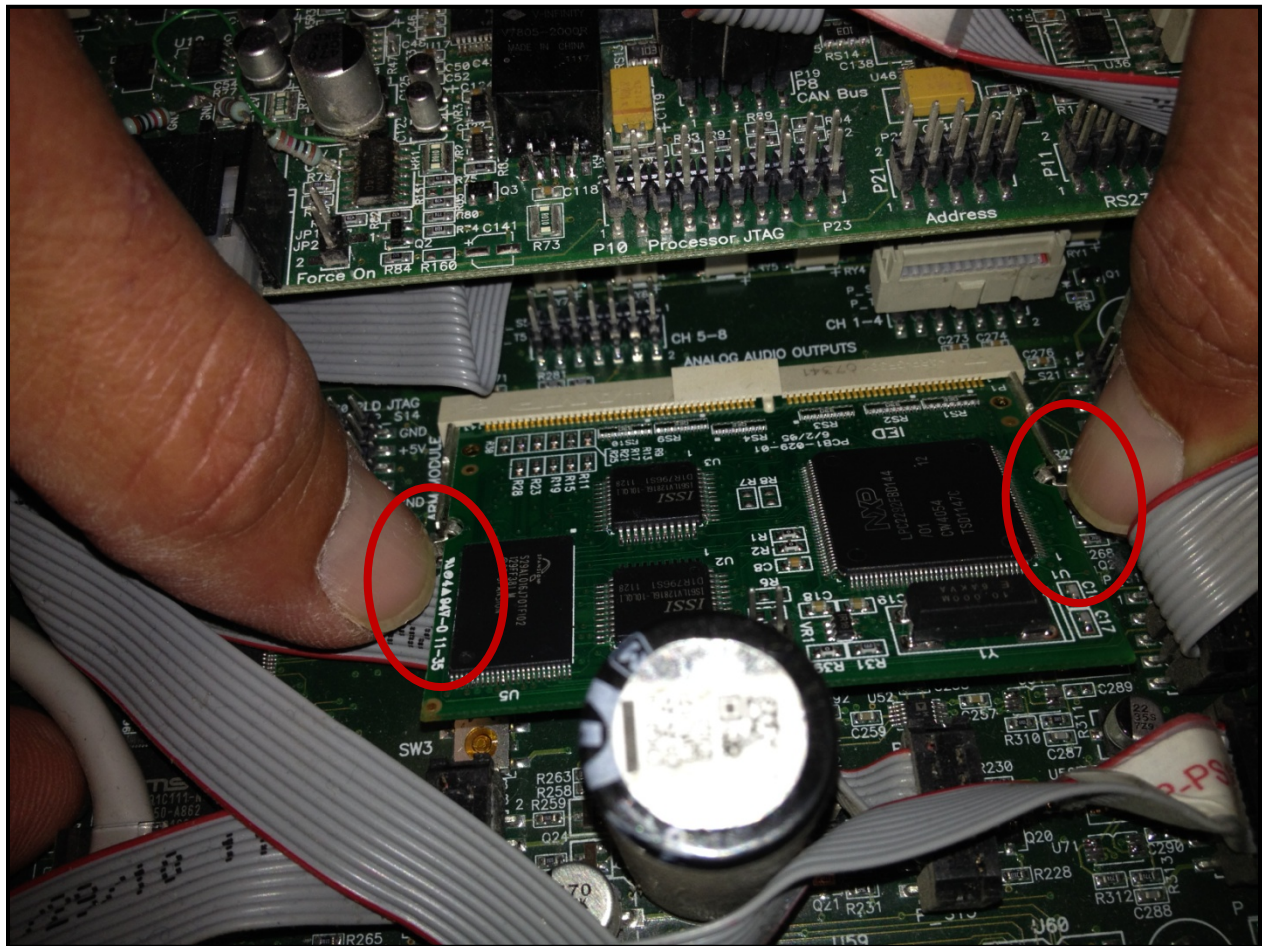


Figure 3

The ARM module will spring forward as it is released.

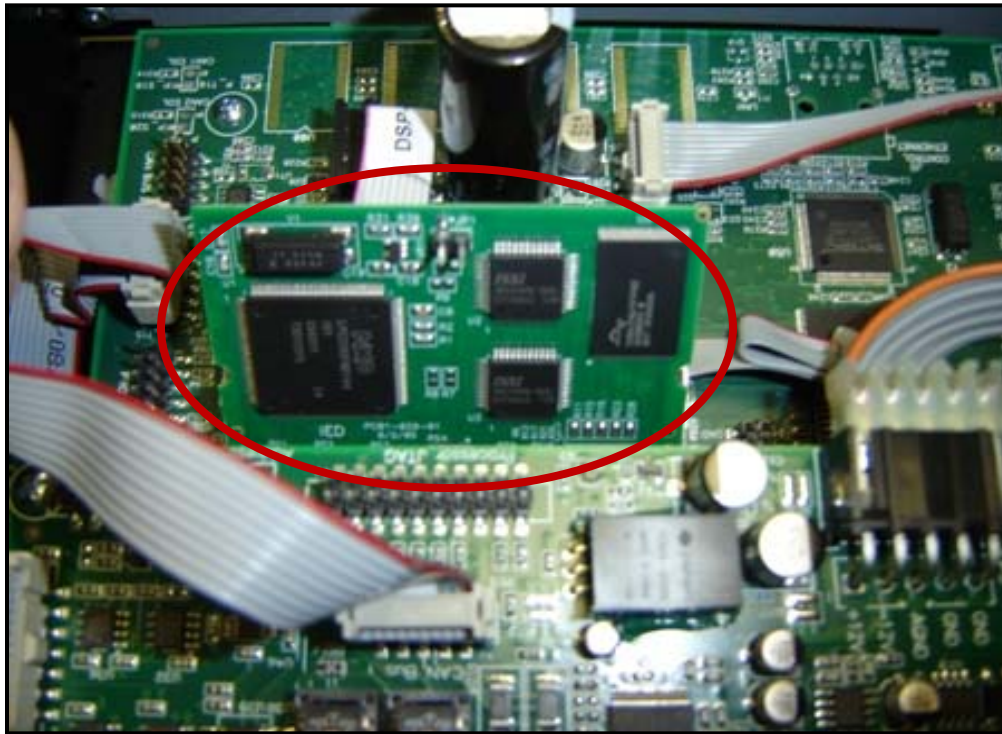


Figure 4

4. After the ARM module springs forward remove it by lifting the module **straight** up.

Note: Be careful lifting the module. Do not lift the module at an angle.

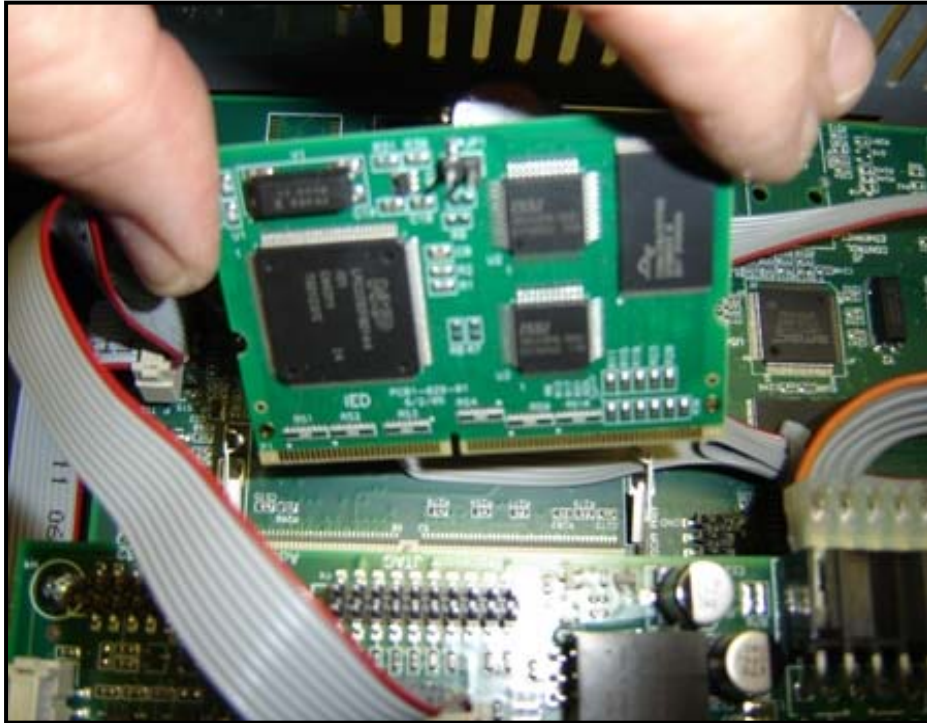


Figure 5

5. Place the new ARM module back in its designated socket. Push the ARM module down until the module is fully inserted; you will hear a clicking sound that will indicate proper seating of the module. Then, push the module back until the locking spring arms lock into place. You will hear another clicking sound when the arms lock into the notches of the module.

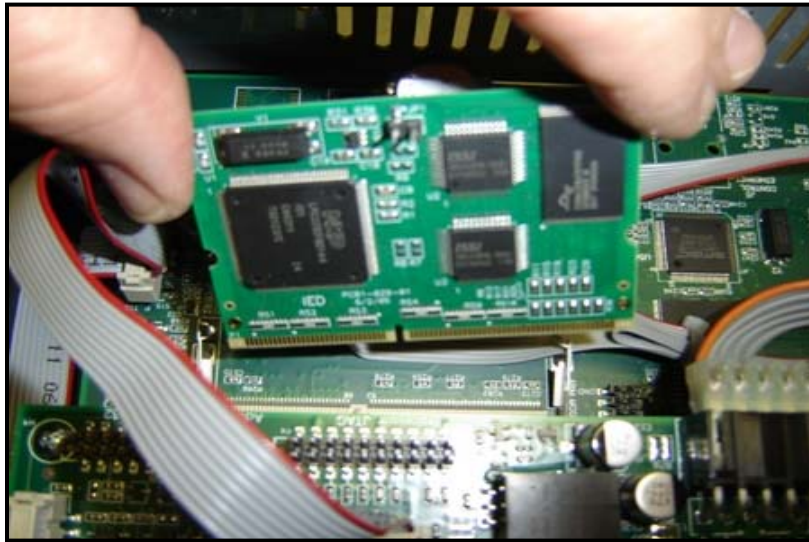


Figure 6

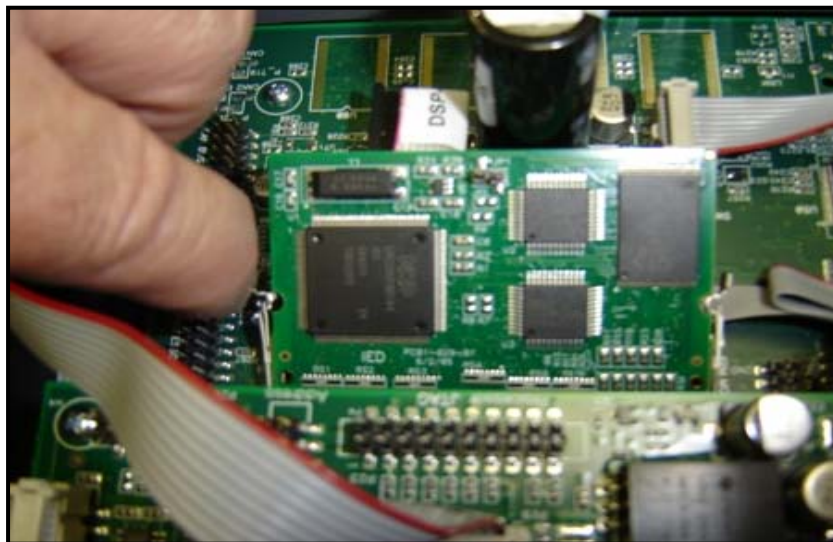


Figure 7

Replacing the CobraNet Module in the IEDT9160

1. Remove the IEDTN08AIO adjacent to the CobraNet module by unplugging the power cable (indicated with a red arrow in **Figure 8**) and removing the four screws at each corner (indicated with a red circles in **Figure 8**).

Note: Use a magnetic tip screwdriver to avoid dropping small screws into the frame.

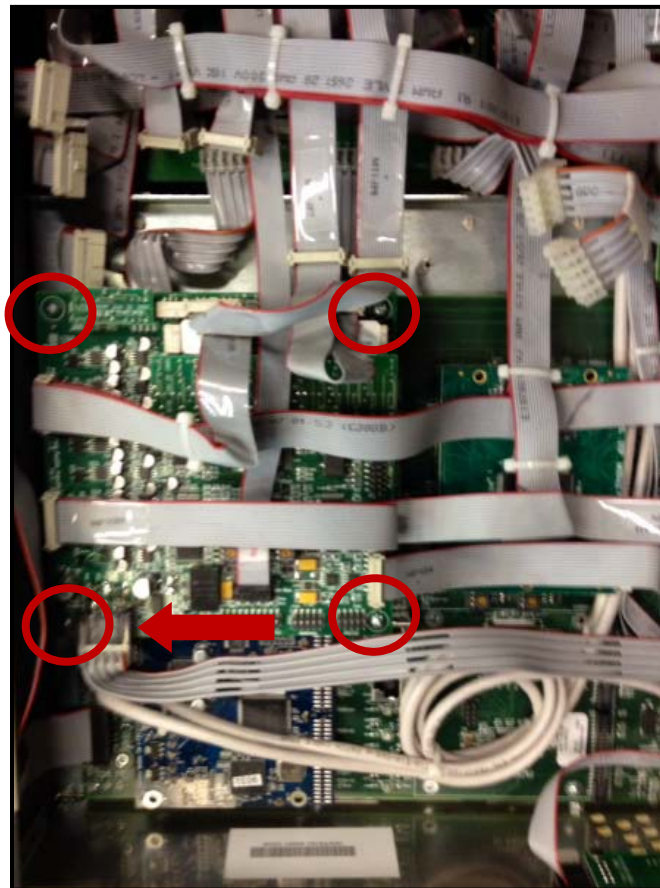


Figure 8

2. Unplug the two Ethernet cables.

Note: They are marked with a “P” (Primary) and an “S” (Secondary) indicating their proper plug-in locations.

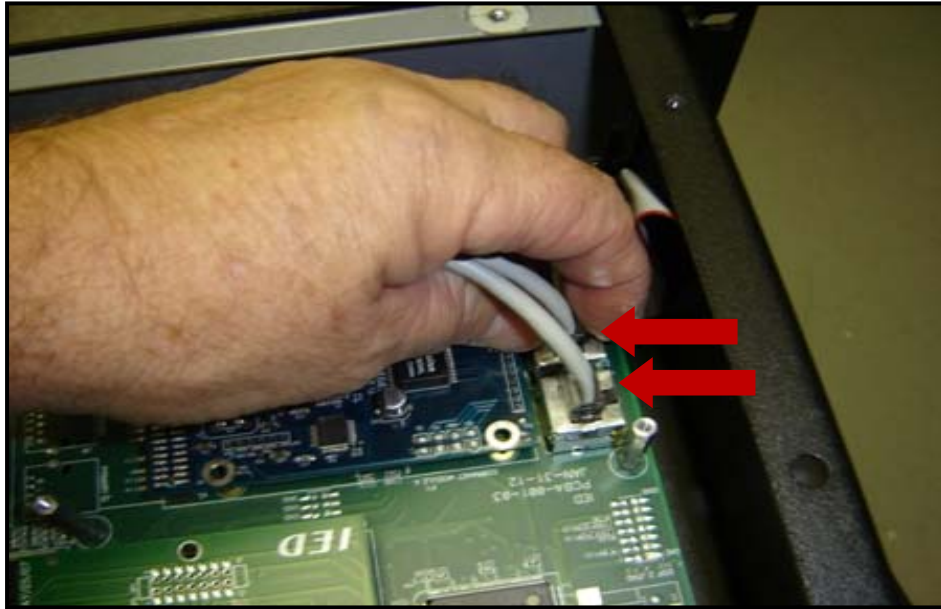


Figure 9

3. Lift the IEDTN08AIO, and the CobraNet module will be exposed and easy to access.

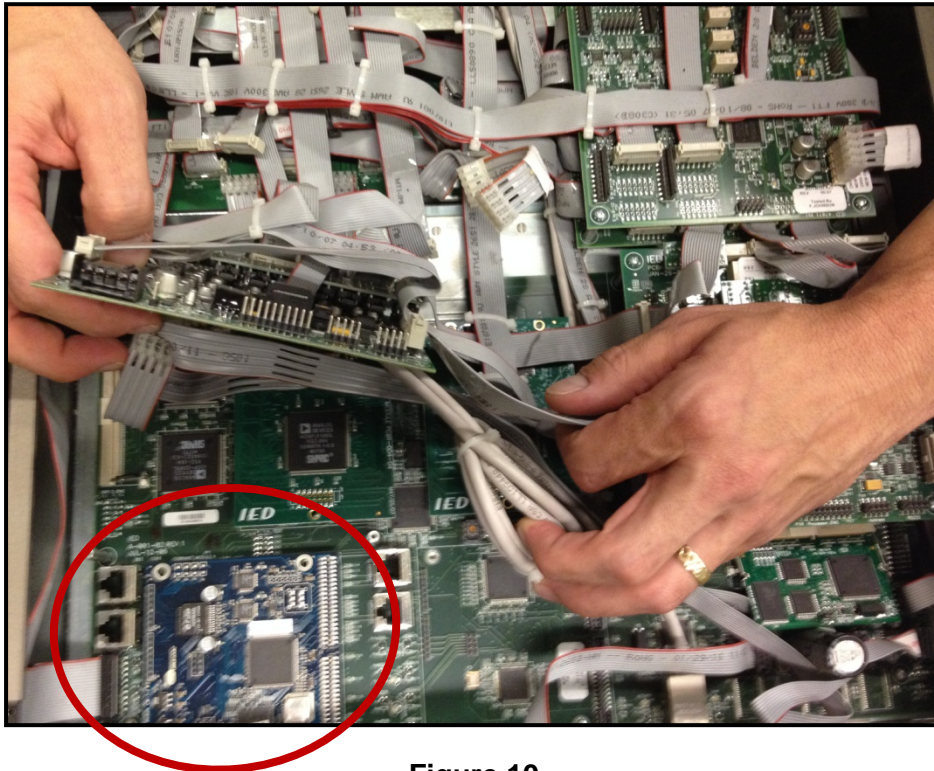


Figure 10

4. To remove the CobraNet module, use both hands and **gently** rock the CobraNet module back and forth while lifting upward.

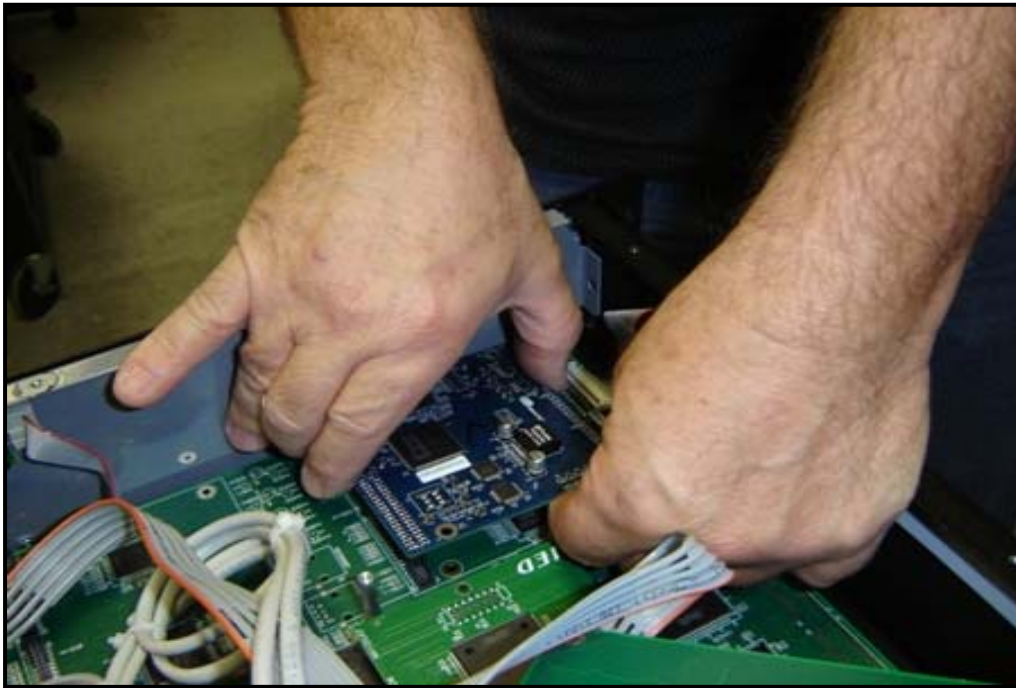


Figure 11

You are now ready to insert the new CobraNet module.

5. Ensure the pins are lined up and straight, and then insert the CobraNet module into the connector and **gently** push it downward until it is fully inserted.



Figure 12

6. Plug the two Ethernet cables back in ensuring that the cable marked “P” is plugged into the Primary and the cable marked “S” is plugged into the Secondary.

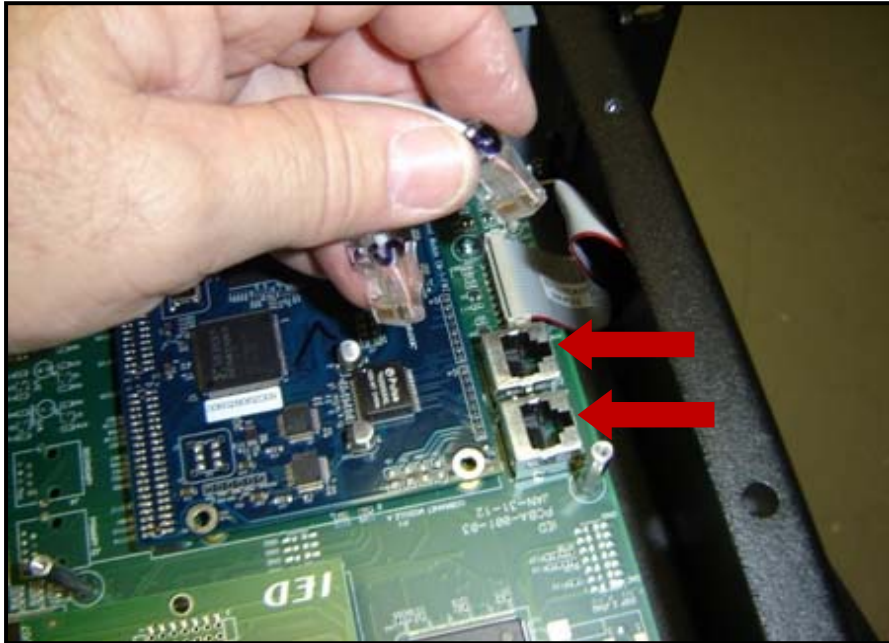


Figure 13

7. Plug the power cord (indicated with a red arrow in **Figure 14**) back into the IEDTN08AIO card, and then set it back into place and replace the four screws (indicated with a red circles in **Figure 14**).

Note: Use a magnetic tip screwdriver to avoid dropping small screws into the frame.

Note (1): Verify all connectors on the IEDTN08AIO card are still seated properly ensuring they did not come loose during disassembly.

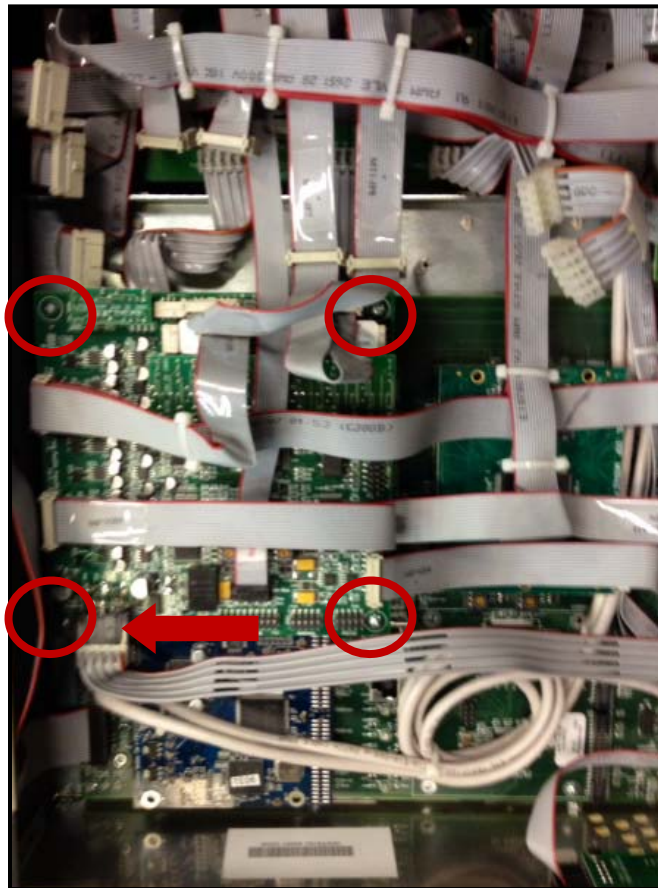


Figure 14

8. Reinstall the lid with the lid screws (12), reinstall external cabling, and then repower the frame.



Figure 15 – T9160 Front

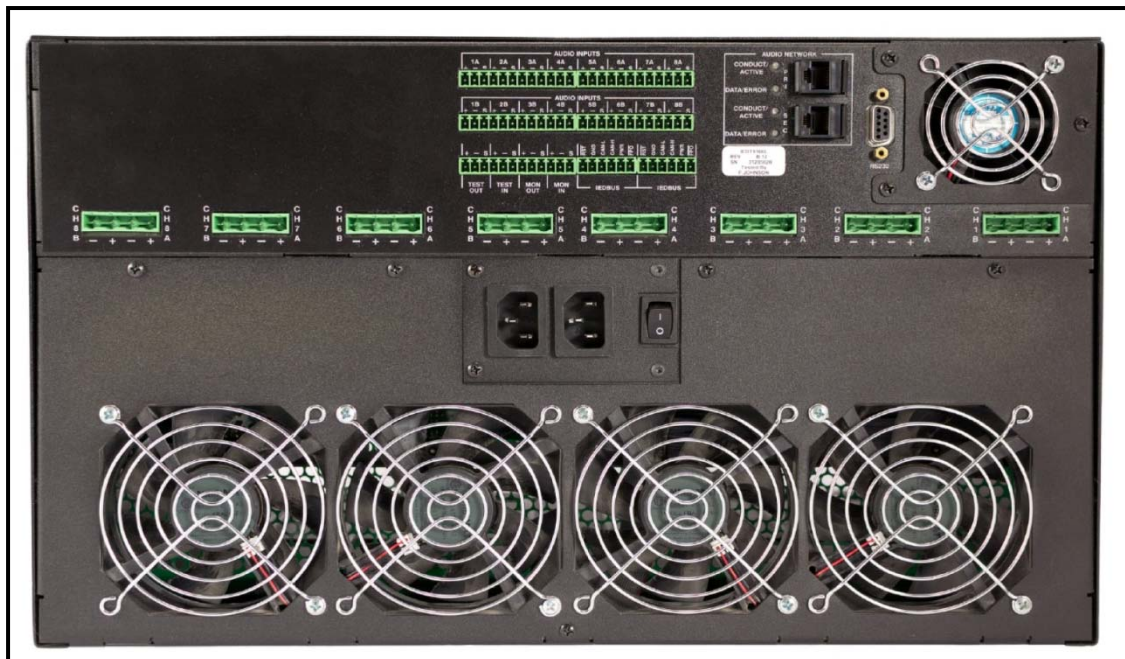


Figure 16 – T9160 Back