

Special Setup of Line-In Audio Device on IP100-Series Products

Ver 1.0 4 May 2020

Introduction

IP100-series products have a pair of line level inputs on the rear of the frame. These connectors attach to a header on the motherboard that on commercial desktop (mini-tower) units would attach to a microphone jack on the front of the unit. These audio devices are pre-configured at the factory properly, but recently it has been learned that some Microsoft Windows security updates are resetting the properties of these devices back to Windows default values, rendering them un-usable by the GCK software.

This document describes the recording device settings that can/should be checked following the application of a Windows security update to ensure all settings are still correct for use by GCK. The summary of the steps to follow are:

1. Locate the appropriate sound recording device
2. Open Property windows and check/set the correct values.

Locate Sound Recording Device

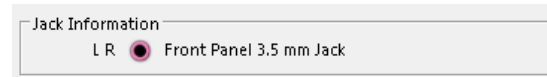
The easiest way to access the sound recording devices is to first right-click on the speaker icon in the Windows Tray. From the pop-up menu that appears, select the “Audio Devices” option.

On the Audio Devices pop-up, click on the “Recording” tab page selector to view the recording devices. At this point, you may see 8-16 devices representing the channels on the CobraNet or Dante sound card installed in the IP100. In addition, you will see “Cable Output” for the VB Audio Cable device (a virtual device used by the GCK software) and one or more other devices.



Most or all the other devices will likely be labeled “Microphone”. If you see one labeled “Line-In Audio” then that is the one configured at the factory to handle the line level inputs on the rear of the IP100, and this is the device you should verify the settings for as described in the next section.

If there is no “Line-In Audio” device appearing, then you should open the properties for each “Microphone” device by either double-clicking the device or selecting it and clicking on the **[Properties]** button. In the middle of the General tab in the Properties pop-up is the device’s Jack Information. You are looking for the device that says “Front Panel 3.5 mm Jack” as shown in the close-up at right.

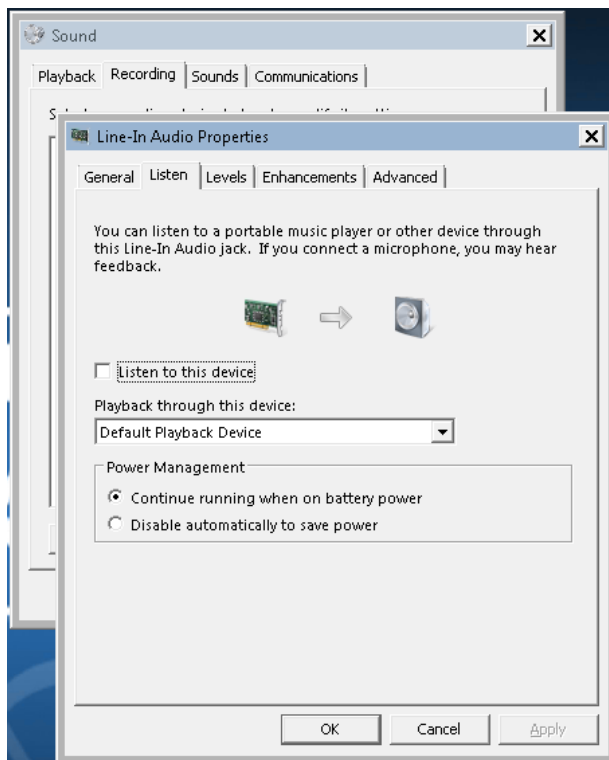


Once the correct device is located, one can leave the Properties pop-up open for the steps in the following section.


Set Recording Device Property Values

Once the correct recording device is located and its Properties pop-up opened, if it is not already correctly named, now is the time to name it *exactly* to “Line-In Audio”. GCK depends on this name to properly locate the correct Windows device to use. This can be done simply by typing the new name in the edit box at the top of the “General” tab.

Next, go to the “Listen” tab page and verify that the checkbox for “Listen to this device” is un-checked as shown below.



Now go to the “Levels” tab page and insure three things:

- Microphone Level is set for 50
- Microphone is Unmuted (i.e., does not look like this:  but like icon at right)
- Microphone Boost is set to 0.0 dB

Now, click on the [OK] button to save all the device properties.

